

5 その他

◆ 総合出火危険度における要因別比率一覧表（冬の夕方）

要因別出火危険度の割合
特別区

区名	要因別					
	火気器具	電気関係	化学薬品	工業炉	危険物施設	その他
千代田区	18.7%	80.0%	0.5%	0.1%	0.7%	0.1%
中央区	21.4%	76.1%	2.1%	0.0%	0.2%	0.1%
港区	22.9%	68.6%	8.0%	0.1%	0.3%	0.0%
新宿区	28.4%	59.3%	11.9%	0.1%	0.2%	0.1%
文京区	29.6%	65.7%	4.2%	0.1%	0.4%	0.0%
台東区	31.1%	68.6%	0.0%	0.0%	0.2%	0.1%
墨田区	29.6%	69.4%	0.4%	0.2%	0.2%	0.3%
江東区	26.3%	71.3%	0.6%	0.3%	0.3%	1.1%
品川区	24.5%	53.4%	21.4%	0.1%	0.3%	0.3%
目黒区	31.0%	56.8%	11.7%	0.1%	0.2%	0.2%
大田区	31.2%	62.9%	4.6%	0.4%	0.3%	0.5%
世田谷区	35.7%	60.3%	0.6%	0.0%	0.2%	3.2%
渋谷区	28.7%	70.8%	0.0%	0.1%	0.3%	0.1%
中野区	34.4%	64.5%	0.5%	0.1%	0.2%	0.3%
杉並区	35.9%	63.4%	0.0%	0.0%	0.1%	0.6%
豊島区	35.5%	64.1%	0.0%	0.1%	0.1%	0.2%
北区	31.4%	65.1%	1.8%	0.2%	0.3%	1.2%
荒川区	30.6%	64.9%	3.1%	0.2%	0.2%	1.0%
板橋区	30.9%	63.9%	1.2%	0.4%	0.4%	3.2%
練馬区	35.3%	57.0%	0.5%	0.1%	0.2%	6.9%
足立区	31.0%	61.0%	0.5%	0.2%	0.2%	7.2%
葛飾区	31.5%	59.5%	0.5%	0.1%	0.1%	8.2%
江戸川区	30.3%	60.0%	1.9%	0.1%	0.2%	7.6%
中央防波堤	41.2%	11.9%	0.0%	0.0%	0.0%	46.9%
特別区	29.5%	64.4%	2.7%	0.2%	0.2%	3.0%

この表は、総合出火危険度測定の結果から、各区市町村で、どのような出火要因からの出火危険度が高いのか割合で示したものです。

市街地の構成（オフィス街や繁華街、住宅地などの割合や薬品取扱施設、工業炉、危険物施設、L P ガスボンベ、高圧ガス施設等の有無）によって各要因の比率が異なっており、各区市町村の地域特性を反映しています。

要因別出火危険度の割合
多摩地区

市町村名	要因別					
	火気器具	電気関係	化学薬品	工業炉	危険物施設	その他
八王子市	30.8%	46.1%	3.4%	0.2%	0.5%	18.9%
立川市	30.7%	52.0%	0.0%	0.1%	0.4%	16.8%
武蔵野市	30.9%	57.5%	9.9%	0.2%	0.1%	1.3%
三鷹市	35.5%	60.9%	0.0%	0.0%	0.4%	3.2%
青梅市	30.0%	43.1%	0.0%	2.4%	0.8%	23.7%
府中市	30.6%	50.4%	0.0%	0.1%	0.5%	18.4%
昭島市	27.0%	42.5%	1.3%	1.5%	0.6%	27.1%
調布市	33.1%	56.3%	0.8%	0.1%	0.4%	9.2%
町田市	31.2%	44.4%	1.3%	0.1%	0.3%	22.7%
小金井市	36.0%	59.5%	0.0%	0.1%	0.2%	4.2%
小平市	30.9%	46.4%	0.0%	0.3%	0.3%	22.2%
日野市	32.6%	48.8%	0.0%	0.3%	0.5%	17.8%
東村山市	30.2%	43.6%	0.0%	0.2%	0.3%	25.6%
国分寺市	37.8%	58.8%	1.5%	0.1%	0.2%	1.4%
国立市	32.3%	54.0%	5.3%	0.3%	0.3%	7.7%
福生市	26.0%	40.9%	0.0%	0.2%	0.5%	32.3%
狛江市	37.7%	60.6%	0.0%	0.0%	0.2%	1.5%
東大和市	30.8%	44.8%	0.0%	0.1%	0.3%	24.0%
清瀬市	23.7%	38.3%	31.4%	0.2%	0.2%	6.2%
東久留米市	35.0%	50.4%	0.0%	0.1%	0.4%	14.1%
武蔵村山市	28.1%	37.6%	0.0%	0.4%	0.5%	33.4%
多摩市	31.6%	56.6%	0.0%	0.0%	0.5%	11.3%
稲城市	30.3%	46.4%	0.0%	0.3%	0.5%	22.6%
羽村市	20.1%	28.9%	0.0%	0.7%	0.8%	49.5%
あきる野市	31.1%	38.2%	0.0%	0.1%	0.7%	30.0%
西東京市	36.1%	55.9%	0.0%	0.2%	0.2%	7.6%
瑞穂町	22.3%	29.3%	0.0%	0.3%	1.6%	46.4%
日の出町	29.9%	39.0%	8.4%	0.9%	0.8%	21.0%
檜原村	25.4%	42.6%	0.0%	0.8%	1.9%	29.3%
奥多摩町	19.0%	34.4%	0.0%	0.0%	1.5%	45.0%
多摩地区	31.1%	48.3%	1.9%	0.3%	0.4%	18.0%
東京都	29.8%	62.0%	2.6%	0.2%	0.3%	5.2%

※割合は、小数点以下第二位を四捨五入した値です。

区市町村別出火危険度一覧表（冬の夕方）

ランク別メッシュ数（上段：メッシュ数、下段：ランク別の割合）
特別区

区名	木造建築物からの出火危険度							非木造建築物からの出火危険度							総合出火危険度									
	平均	低 ← 高					平均	低 ← 高					平均	低 ← 高					平均	低 ← 高				
		1	2	3	4	5		6	1	2	3	4		5	6	1	2	3		4	5	6		
千代田区	1.00	187 (100.0%)	0 (0.0%)	0 (0.0%)	0 (0.0%)	0 (0.0%)	0 (0.0%)	2.28	69 (36.9%)	45 (24.1%)	36 (19.3%)	26 (13.9%)	11 (5.9%)	0 (0.0%)	2.28	69 (36.9%)	45 (24.1%)	36 (19.3%)	26 (13.9%)	11 (5.9%)	0 (0.0%)			
中央区	1.07	162 (93.6%)	10 (5.8%)	1 (0.6%)	0 (0.0%)	0 (0.0%)	0 (0.0%)	3.25	31 (17.9%)	17 (9.8%)	41 (23.7%)	48 (27.7%)	34 (19.7%)	2 (1.2%)	3.31	31 (17.9%)	15 (8.7%)	36 (20.8%)	53 (30.6%)	36 (20.8%)	2 (1.2%)			
港区	1.00	359 (100.0%)	0 (0.0%)	0 (0.0%)	0 (0.0%)	0 (0.0%)	0 (0.0%)	2.01	150 (41.8%)	108 (30.1%)	63 (17.5%)	25 (7.0%)	10 (2.8%)	3 (0.8%)	2.07	135 (37.6%)	120 (33.4%)	64 (17.8%)	27 (7.5%)	10 (2.8%)	3 (0.8%)			
新宿区	1.04	284 (96.3%)	11 (3.7%)	0 (0.0%)	0 (0.0%)	0 (0.0%)	0 (0.0%)	1.67	152 (51.5%)	102 (34.6%)	29 (9.8%)	10 (3.4%)	2 (0.7%)	0 (0.0%)	1.92	88 (29.8%)	158 (53.6%)	37 (12.5%)	10 (3.4%)	2 (0.7%)	0 (0.0%)			
文京区	1.01	177 (98.9%)	2 (1.1%)	0 (0.0%)	0 (0.0%)	0 (0.0%)	0 (0.0%)	1.35	123 (68.7%)	50 (27.9%)	6 (3.4%)	0 (0.0%)	0 (0.0%)	0 (0.0%)	1.53	94 (52.5%)	76 (42.5%)	9 (5.0%)	0 (0.0%)	0 (0.0%)	0 (0.0%)			
台東区	1.96	60 (36.6%)	57 (34.8%)	40 (24.4%)	7 (4.3%)	0 (0.0%)	0 (0.0%)	3.20	28 (17.1%)	9 (5.5%)	35 (21.3%)	86 (52.4%)	6 (3.7%)	0 (0.0%)	3.43	21 (12.8%)	11 (6.7%)	21 (12.8%)	99 (60.4%)	12 (7.3%)	0 (0.0%)			
墨田区	2.67	33 (15.0%)	49 (22.3%)	96 (43.6%)	42 (19.1%)	0 (0.0%)	0 (0.0%)	2.60	33 (15.0%)	64 (29.1%)	85 (38.6%)	33 (15.0%)	5 (2.3%)	0 (0.0%)	3.40	10 (4.5%)	20 (9.1%)	68 (30.9%)	117 (53.2%)	5 (2.3%)	0 (0.0%)			
江東区	1.48	530 (71.4%)	81 (10.9%)	117 (15.8%)	14 (1.9%)	0 (0.0%)	0 (0.0%)	1.89	380 (51.2%)	115 (15.5%)	199 (26.8%)	48 (6.5%)	0 (0.0%)	0 (0.0%)	2.08	366 (49.3%)	83 (11.2%)	157 (21.2%)	136 (18.3%)	0 (0.0%)	0 (0.0%)			
品川区	1.28	284 (73.2%)	100 (25.8%)	4 (1.0%)	0 (0.0%)	0 (0.0%)	0 (0.0%)	1.46	276 (71.1%)	71 (18.3%)	23 (5.9%)	14 (3.6%)	1 (0.3%)	3 (0.8%)	1.79	173 (44.6%)	148 (38.1%)	48 (12.4%)	15 (3.9%)	1 (0.3%)	3 (0.8%)			
目黒区	1.14	207 (86.3%)	33 (13.8%)	0 (0.0%)	0 (0.0%)	0 (0.0%)	0 (0.0%)	1.12	217 (90.4%)	18 (7.5%)	4 (1.7%)	1 (0.4%)	0 (0.0%)	0 (0.0%)	1.32	171 (71.3%)	63 (26.3%)	4 (1.7%)	2 (0.8%)	0 (0.0%)	0 (0.0%)			
大田区	1.53	707 (66.2%)	167 (15.6%)	178 (16.7%)	16 (1.5%)	0 (0.0%)	0 (0.0%)	1.35	788 (73.8%)	222 (20.8%)	38 (3.6%)	9 (0.8%)	11 (1.0%)	0 (0.0%)	1.68	650 (60.9%)	151 (14.1%)	238 (22.3%)	18 (1.7%)	11 (1.0%)	0 (0.0%)			
世田谷区	1.14	804 (85.8%)	133 (14.2%)	0 (0.0%)	0 (0.0%)	0 (0.0%)	0 (0.0%)	1.01	931 (99.4%)	6 (0.6%)	0 (0.0%)	0 (0.0%)	0 (0.0%)	0 (0.0%)	1.07	867 (92.5%)	70 (7.5%)	0 (0.0%)	0 (0.0%)	0 (0.0%)	0 (0.0%)			
渋谷区	1.03	233 (96.7%)	8 (3.3%)	0 (0.0%)	0 (0.0%)	0 (0.0%)	0 (0.0%)	1.49	154 (63.9%)	58 (24.1%)	28 (11.6%)	1 (0.4%)	0 (0.0%)	0 (0.0%)	1.70	105 (43.6%)	104 (43.2%)	31 (12.9%)	1 (0.4%)	0 (0.0%)	0 (0.0%)			
中野区	1.26	179 (73.7%)	64 (26.3%)	0 (0.0%)	0 (0.0%)	0 (0.0%)	0 (0.0%)	1.05	231 (95.1%)	12 (4.9%)	0 (0.0%)	0 (0.0%)	0 (0.0%)	0 (0.0%)	1.37	152 (62.6%)	91 (37.4%)	0 (0.0%)	0 (0.0%)	0 (0.0%)	0 (0.0%)			
杉並区	1.20	435 (79.5%)	112 (20.5%)	0 (0.0%)	0 (0.0%)	0 (0.0%)	0 (0.0%)	1.01	540 (98.7%)	7 (1.3%)	0 (0.0%)	0 (0.0%)	0 (0.0%)	0 (0.0%)	1.14	473 (86.5%)	74 (13.5%)	0 (0.0%)	0 (0.0%)	0 (0.0%)	0 (0.0%)			
豊島区	1.29	149 (71.3%)	60 (28.7%)	0 (0.0%)	0 (0.0%)	0 (0.0%)	0 (0.0%)	1.40	145 (69.4%)	47 (22.5%)	15 (7.2%)	2 (1.0%)	0 (0.0%)	0 (0.0%)	1.78	68 (32.5%)	122 (58.4%)	15 (7.2%)	4 (1.9%)	0 (0.0%)	0 (0.0%)			
北区	1.81	154 (45.3%)	103 (30.3%)	78 (22.9%)	5 (1.5%)	0 (0.0%)	0 (0.0%)	1.48	219 (64.4%)	85 (25.0%)	31 (9.1%)	5 (1.5%)	0 (0.0%)	0 (0.0%)	1.98	127 (37.4%)	107 (31.5%)	93 (27.4%)	13 (3.8%)	0 (0.0%)	0 (0.0%)			
荒川区	2.82	29 (17.9%)	19 (11.7%)	66 (40.7%)	48 (29.6%)	0 (0.0%)	0 (0.0%)	2.35	15 (9.3%)	75 (46.3%)	72 (44.4%)	0 (0.0%)	0 (0.0%)	0 (0.0%)	3.25	1 (0.6%)	25 (15.4%)	69 (42.6%)	67 (41.4%)	0 (0.0%)	0 (0.0%)			
板橋区	1.18	452 (84.8%)	69 (12.9%)	11 (2.1%)	0 (0.0%)	0 (0.0%)	0 (0.2%)	1.19	450 (84.4%)	69 (12.9%)	13 (2.4%)	0 (0.0%)	0 (0.0%)	0 (0.2%)	1.42	360 (67.5%)	125 (23.5%)	47 (8.8%)	0 (0.0%)	0 (0.0%)	0 (0.2%)			
練馬区	1.09	730 (91.4%)	69 (8.6%)	0 (0.0%)	0 (0.0%)	0 (0.0%)	0 (0.0%)	1.00	797 (99.7%)	2 (0.3%)	0 (0.0%)	0 (0.0%)	0 (0.0%)	0 (0.0%)	1.03	772 (96.6%)	27 (3.4%)	0 (0.0%)	0 (0.0%)	0 (0.0%)	0 (0.0%)			
足立区	2.82	89 (9.9%)	165 (18.4%)	465 (51.8%)	177 (19.7%)	2 (0.2%)	0 (0.0%)	1.33	632 (70.4%)	240 (26.7%)	26 (2.9%)	0 (0.0%)	0 (0.0%)	0 (0.0%)	2.62	55 (6.1%)	268 (29.8%)	540 (60.1%)	35 (3.9%)	0 (0.0%)	0 (0.0%)			
葛飾区	2.99	62 (10.6%)	65 (11.1%)	275 (46.8%)	185 (31.5%)	0 (0.0%)	0 (0.0%)	1.29	442 (75.3%)	118 (20.1%)	27 (4.6%)	0 (0.0%)	0 (0.0%)	0 (0.0%)	2.58	69 (11.8%)	135 (23.0%)	354 (60.3%)	29 (4.9%)	0 (0.0%)	0 (0.0%)			
江戸川区	2.62	157 (18.9%)	136 (16.4%)	400 (48.3%)	136 (16.4%)	0 (0.0%)	0 (0.0%)	1.38	582 (70.2%)	189 (22.8%)	50 (6.0%)	8 (1.0%)	0 (0.0%)	0 (0.0%)	2.42	127 (15.3%)	257 (31.0%)	413 (49.8%)	32 (3.9%)	0 (0.0%)	0 (0.0%)			
中央防波堤	1.00	148 (100.0%)	0 (0.0%)	0 (0.0%)	0 (0.0%)	0 (0.0%)	0 (0.0%)	1.00	148 (100.0%)	0 (0.0%)	0 (0.0%)	0 (0.0%)	0 (0.0%)	0 (0.0%)	1.00	148 (100.0%)	0 (0.0%)	0 (0.0%)	0 (0.0%)	0 (0.0%)	0 (0.0%)			
特別区合計	1.66	6,611 (63.0%)	1,513 (14.4%)	1,731 (16.5%)	630 (6.0%)	2 (0.0%)	1	1.45	7,533 (71.8%)	1,729 (16.5%)	821 (7.8%)	316 (3.0%)	80 (0.8%)	9 (0.1%)	1.89	5,132 (48.9%)	2,295 (21.9%)	2,280 (21.7%)	684 (6.5%)	88 (0.8%)	9 (0.1%)			

この表は、冬の夕方における木造建築物からの出火危険度、非木造建築物からの出火危険度及び総合出火危険度について、どの危険度ランクの250mメッシュがいくつ（何％）あるのかを区市町村ごとに示しています。

なお、26 ページ、27 ページの消防署別出火危険度一覧表は、消防署の管轄別に各危険度ランクの250mメッシュの数と割合を集計したものです。

※2つ以上の区市町村及び消防署管轄にかかるメッシュについては面積割合が大きい側の集計に含めています。
※割合は、小数点以下第二位を四捨五入した値です。

ランク別メッシュ数（上段：メッシュ数、下段：ランク別の割合）
多摩地区

市町村名	木造建築物からの出火危険度							非木造建築物からの出火危険度							総合出火危険度							
	平均	低					高	平均	低					高	平均	低					高	
		1	2	3	4	5			1	2	3	4	5			1	2	3	4	5		6
八王子市	1.00	3,022 (100.0%)	0 (0.0%)	0 (0.0%)	0 (0.0%)	0 (0.0%)	0 (0.0%)	1.00	3,017 (99.8%)	5 (0.2%)	0 (0.0%)	0 (0.0%)	0 (0.0%)	0 (0.0%)	1.00	3,013 (99.7%)	8 (0.3%)	1 (0.0%)	0 (0.0%)	0 (0.0%)	0 (0.0%)	0 (0.0%)
立川市	1.02	383 (97.7%)	9 (2.3%)	0 (0.0%)	0 (0.0%)	0 (0.0%)	0 (0.0%)	1.02	383 (97.7%)	9 (2.3%)	0 (0.0%)	0 (0.0%)	0 (0.0%)	0 (0.0%)	1.04	375 (95.7%)	17 (4.3%)	0 (0.0%)	0 (0.0%)	0 (0.0%)	0 (0.0%)	
武蔵野市	1.00	174 (100.0%)	0 (0.0%)	0 (0.0%)	0 (0.0%)	0 (0.0%)	0 (0.0%)	1.07	161 (92.5%)	13 (7.5%)	0 (0.0%)	0 (0.0%)	0 (0.0%)	0 (0.0%)	1.10	156 (89.7%)	18 (10.3%)	0 (0.0%)	0 (0.0%)	0 (0.0%)	0 (0.0%)	
三鷹市	1.02	257 (98.5%)	4 (1.5%)	0 (0.0%)	0 (0.0%)	0 (0.0%)	0 (0.0%)	1.01	258 (98.9%)	3 (1.1%)	0 (0.0%)	0 (0.0%)	0 (0.0%)	0 (0.0%)	1.02	255 (97.7%)	6 (2.3%)	0 (0.0%)	0 (0.0%)	0 (0.0%)	0 (0.0%)	
青梅市	1.00	1,704 (100.0%)	0 (0.0%)	0 (0.0%)	0 (0.0%)	0 (0.0%)	0 (0.0%)	1.00	1,704 (100.0%)	0 (0.0%)	0 (0.0%)	0 (0.0%)	0 (0.0%)	0 (0.0%)	1.00	1,704 (100.0%)	0 (0.0%)	0 (0.0%)	0 (0.0%)	0 (0.0%)	0 (0.0%)	
府中市	1.01	461 (98.5%)	7 (1.5%)	0 (0.0%)	0 (0.0%)	0 (0.0%)	0 (0.0%)	1.00	466 (99.6%)	2 (0.4%)	0 (0.0%)	0 (0.0%)	0 (0.0%)	0 (0.0%)	1.01	461 (98.5%)	7 (1.5%)	0 (0.0%)	0 (0.0%)	0 (0.0%)	0 (0.0%)	
昭島市	1.05	259 (94.9%)	14 (5.1%)	0 (0.0%)	0 (0.0%)	0 (0.0%)	0 (0.0%)	1.00	273 (100.0%)	0 (0.0%)	0 (0.0%)	0 (0.0%)	0 (0.0%)	0 (0.0%)	1.00	273 (100.0%)	0 (0.0%)	0 (0.0%)	0 (0.0%)	0 (0.0%)	0 (0.0%)	
調布市	1.00	354 (100.0%)	0 (0.0%)	0 (0.0%)	0 (0.0%)	0 (0.0%)	0 (0.0%)	1.01	352 (99.4%)	2 (0.6%)	0 (0.0%)	0 (0.0%)	0 (0.0%)	0 (0.0%)	1.01	351 (99.2%)	3 (0.8%)	0 (0.0%)	0 (0.0%)	0 (0.0%)	0 (0.0%)	
町田市	1.01	1,283 (99.4%)	8 (0.6%)	0 (0.0%)	0 (0.0%)	0 (0.0%)	0 (0.0%)	1.00	1,289 (99.8%)	2 (0.2%)	0 (0.0%)	0 (0.0%)	0 (0.0%)	0 (0.0%)	1.00	1,287 (99.7%)	4 (0.3%)	0 (0.0%)	0 (0.0%)	0 (0.0%)	0 (0.0%)	
小金井市	1.00	182 (100.0%)	0 (0.0%)	0 (0.0%)	0 (0.0%)	0 (0.0%)	0 (0.0%)	1.00	182 (100.0%)	0 (0.0%)	0 (0.0%)	0 (0.0%)	0 (0.0%)	0 (0.0%)	1.01	180 (98.9%)	2 (1.1%)	0 (0.0%)	0 (0.0%)	0 (0.0%)	0 (0.0%)	
小平市	1.05	310 (94.8%)	17 (5.2%)	0 (0.0%)	0 (0.0%)	0 (0.0%)	0 (0.0%)	1.00	327 (100.0%)	0 (0.0%)	0 (0.0%)	0 (0.0%)	0 (0.0%)	0 (0.0%)	1.00	327 (100.0%)	0 (0.0%)	0 (0.0%)	0 (0.0%)	0 (0.0%)	0 (0.0%)	
日野市	1.00	440 (99.8%)	1 (0.2%)	0 (0.0%)	0 (0.0%)	0 (0.0%)	0 (0.0%)	1.00	441 (100.0%)	0 (0.0%)	0 (0.0%)	0 (0.0%)	0 (0.0%)	0 (0.0%)	1.00	441 (100.0%)	0 (0.0%)	0 (0.0%)	0 (0.0%)	0 (0.0%)	0 (0.0%)	
東村山市	1.08	266 (91.7%)	24 (8.3%)	0 (0.0%)	0 (0.0%)	0 (0.0%)	0 (0.0%)	1.00	290 (100.0%)	0 (0.0%)	0 (0.0%)	0 (0.0%)	0 (0.0%)	0 (0.0%)	1.01	287 (99.0%)	3 (1.0%)	0 (0.0%)	0 (0.0%)	0 (0.0%)	0 (0.0%)	
国分寺市	1.00	185 (100.0%)	0 (0.0%)	0 (0.0%)	0 (0.0%)	0 (0.0%)	0 (0.0%)	1.02	182 (98.4%)	3 (1.6%)	0 (0.0%)	0 (0.0%)	0 (0.0%)	0 (0.0%)	1.03	180 (97.3%)	5 (2.7%)	0 (0.0%)	0 (0.0%)	0 (0.0%)	0 (0.0%)	
国立市	1.00	131 (100.0%)	0 (0.0%)	0 (0.0%)	0 (0.0%)	0 (0.0%)	0 (0.0%)	1.00	131 (100.0%)	0 (0.0%)	0 (0.0%)	0 (0.0%)	0 (0.0%)	0 (0.0%)	1.01	130 (99.2%)	1 (0.8%)	0 (0.0%)	0 (0.0%)	0 (0.0%)	0 (0.0%)	
福生市	1.00	122 (100.0%)	0 (0.0%)	0 (0.0%)	0 (0.0%)	0 (0.0%)	0 (0.0%)	1.00	122 (100.0%)	0 (0.0%)	0 (0.0%)	0 (0.0%)	0 (0.0%)	0 (0.0%)	1.00	122 (100.0%)	0 (0.0%)	0 (0.0%)	0 (0.0%)	0 (0.0%)	0 (0.0%)	
狛江市	1.00	112 (100.0%)	0 (0.0%)	0 (0.0%)	0 (0.0%)	0 (0.0%)	0 (0.0%)	1.00	112 (100.0%)	0 (0.0%)	0 (0.0%)	0 (0.0%)	0 (0.0%)	0 (0.0%)	1.00	112 (100.0%)	0 (0.0%)	0 (0.0%)	0 (0.0%)	0 (0.0%)	0 (0.0%)	
東大和市	1.05	217 (94.8%)	12 (5.2%)	0 (0.0%)	0 (0.0%)	0 (0.0%)	0 (0.0%)	1.00	229 (100.0%)	0 (0.0%)	0 (0.0%)	0 (0.0%)	0 (0.0%)	0 (0.0%)	1.00	229 (100.0%)	0 (0.0%)	0 (0.0%)	0 (0.0%)	0 (0.0%)	0 (0.0%)	
清瀬市	1.01	193 (99.5%)	1 (0.5%)	0 (0.0%)	0 (0.0%)	0 (0.0%)	0 (0.0%)	1.08	187 (96.4%)	1 (0.5%)	3 (1.5%)	3 (1.5%)	0 (0.0%)	0 (0.0%)	1.09	186 (95.9%)	2 (1.0%)	3 (1.5%)	3 (1.5%)	0 (0.0%)	0 (0.0%)	
東久留米市	1.01	215 (98.6%)	3 (1.4%)	0 (0.0%)	0 (0.0%)	0 (0.0%)	0 (0.0%)	1.00	218 (100.0%)	0 (0.0%)	0 (0.0%)	0 (0.0%)	0 (0.0%)	0 (0.0%)	1.00	218 (100.0%)	0 (0.0%)	0 (0.0%)	0 (0.0%)	0 (0.0%)	0 (0.0%)	
武蔵村山市	1.04	236 (96.3%)	9 (3.7%)	0 (0.0%)	0 (0.0%)	0 (0.0%)	0 (0.0%)	1.00	245 (100.0%)	0 (0.0%)	0 (0.0%)	0 (0.0%)	0 (0.0%)	0 (0.0%)	1.00	245 (100.0%)	0 (0.0%)	0 (0.0%)	0 (0.0%)	0 (0.0%)	0 (0.0%)	
多摩市	1.00	343 (100.0%)	0 (0.0%)	0 (0.0%)	0 (0.0%)	0 (0.0%)	0 (0.0%)	1.00	343 (100.0%)	0 (0.0%)	0 (0.0%)	0 (0.0%)	0 (0.0%)	0 (0.0%)	1.00	343 (100.0%)	0 (0.0%)	0 (0.0%)	0 (0.0%)	0 (0.0%)	0 (0.0%)	
稲城市	1.00	312 (100.0%)	0 (0.0%)	0 (0.0%)	0 (0.0%)	0 (0.0%)	0 (0.0%)	1.00	312 (100.0%)	0 (0.0%)	0 (0.0%)	0 (0.0%)	0 (0.0%)	0 (0.0%)	1.00	312 (100.0%)	0 (0.0%)	0 (0.0%)	0 (0.0%)	0 (0.0%)	0 (0.0%)	
羽村市	1.24	121 (77.1%)	34 (21.7%)	2 (1.3%)	0 (0.0%)	0 (0.0%)	0 (0.0%)	1.00	157 (100.0%)	0 (0.0%)	0 (0.0%)	0 (0.0%)	0 (0.0%)	0 (0.0%)	1.01	155 (98.7%)	2 (1.3%)	0 (0.0%)	0 (0.0%)	0 (0.0%)	0 (0.0%)	
あきる野市	1.00	1,176 (100.0%)	0 (0.0%)	0 (0.0%)	0 (0.0%)	0 (0.0%)	0 (0.0%)	1.00	1,176 (100.0%)	0 (0.0%)	0 (0.0%)	0 (0.0%)	0 (0.0%)	0 (0.0%)	1.00	1,176 (100.0%)	0 (0.0%)	0 (0.0%)	0 (0.0%)	0 (0.0%)	0 (0.0%)	
西東京市	1.01	257 (98.8%)	3 (1.2%)	0 (0.0%)	0 (0.0%)	0 (0.0%)	0 (0.0%)	1.00	260 (100.0%)	0 (0.0%)	0 (0.0%)	0 (0.0%)	0 (0.0%)	0 (0.0%)	1.00	260 (100.0%)	0 (0.0%)	0 (0.0%)	0 (0.0%)	0 (0.0%)	0 (0.0%)	
瑞穂町	1.03	257 (97.7%)	5 (1.9%)	1 (0.4%)	0 (0.0%)	0 (0.0%)	0 (0.0%)	1.00	263 (100.0%)	0 (0.0%)	0 (0.0%)	0 (0.0%)	0 (0.0%)	0 (0.0%)	1.01	261 (99.2%)	1 (0.4%)	1 (0.4%)	0 (0.0%)	0 (0.0%)	0 (0.0%)	
日の出町	1.00	453 (100.0%)	0 (0.0%)	0 (0.0%)	0 (0.0%)	0 (0.0%)	0 (0.0%)	1.00	453 (100.0%)	0 (0.0%)	0 (0.0%)	0 (0.0%)	0 (0.0%)	0 (0.0%)	1.00	453 (100.0%)	0 (0.0%)	0 (0.0%)	0 (0.0%)	0 (0.0%)	0 (0.0%)	
檜原村	1.00	1,732 (100.0%)	0 (0.0%)	0 (0.0%)	0 (0.0%)	0 (0.0%)	0 (0.0%)	1.00	1,732 (100.0%)	0 (0.0%)	0 (0.0%)	0 (0.0%)	0 (0.0%)	0 (0.0%)	1.00	1,732 (100.0%)	0 (0.0%)	0 (0.0%)	0 (0.0%)	0 (0.0%)	0 (0.0%)	
奥多摩町	1.00	3,670 (100.0%)	0 (0.0%)	0 (0.0%)	0 (0.0%)	0 (0.0%)	0 (0.0%)	1.00	3,670 (100.0%)	0 (0.0%)	0 (0.0%)	0 (0.0%)	0 (0.0%)	0 (0.0%)	1.00	3,670 (100.0%)	0 (0.0%)	0 (0.0%)	0 (0.0%)	0 (0.0%)	0 (0.0%)	
多摩地区合計	1.01	18,827 (99.2%)	151 (0.8%)	3 (0.0%)	0 (0.0%)	0 (0.0%)	0 (0.0%)	1.00	18,935 (99.8%)	40 (0.2%)	3 (0.0%)	3 (0.0%)	0 (0.0%)	0 (0.0%)	1.01	18,894 (99.5%)	79 (0.4%)	5 (0.0%)	3 (0.0%)	0 (0.0%)	0 (0.0%)	

◆ 消防署別出火危険度一覧表（冬の夕方）

ランク別メッシュ数（上段：メッシュ数、下段：ランク別の割合）
特別区

消 防 署 名	平均	木造建築物からの出火危険度						平均	非木造建築物からの出火危険度						平均	総合出火危険度					
		低 ← 高							低 ← 高							低 ← 高					
		1	2	3	4	5	6		1	2	3	4	5	6		1	2	3	4	5	6
丸 の 内	1.00	63 (100.0%)	0 (0.0%)	0 (0.0%)	0 (0.0%)	0 (0.0%)	0 (0.0%)	1.75	37 (58.7%)	10 (15.9%)	11 (17.5%)	5 (7.9%)	0 (0.0%)	0 (0.0%)	1.75	37 (58.7%)	10 (15.9%)	11 (17.5%)	5 (7.9%)	0 (0.0%)	0 (0.0%)
麴 町	1.00	73 (100.0%)	0 (0.0%)	0 (0.0%)	0 (0.0%)	0 (0.0%)	0 (0.0%)	1.71	32 (43.8%)	30 (41.1%)	11 (15.1%)	0 (0.0%)	0 (0.0%)	0 (0.0%)	1.71	32 (43.8%)	30 (41.1%)	11 (15.1%)	0 (0.0%)	0 (0.0%)	0 (0.0%)
神 田	1.00	51 (100.0%)	0 (0.0%)	0 (0.0%)	0 (0.0%)	0 (0.0%)	0 (0.0%)	3.76	0 (0.0%)	4 (7.8%)	15 (29.4%)	21 (41.2%)	11 (21.6%)	0 (0.0%)	3.76	0 (0.0%)	4 (7.8%)	15 (29.4%)	21 (41.2%)	11 (21.6%)	0 (0.0%)
京 橋	1.00	61 (100.0%)	0 (0.0%)	0 (0.0%)	0 (0.0%)	0 (0.0%)	0 (0.0%)	3.51	10 (16.4%)	6 (6.6%)	4 (21.3%)	13 (23.0%)	14 (31.1%)	19 (1.6%)	3.61	10 (16.4%)	2 (3.3%)	11 (18.0%)	18 (29.5%)	19 (31.1%)	1 (1.6%)
日 本 橋	1.14	44 (88.0%)	5 (10.0%)	1 (2.0%)	0 (0.0%)	0 (0.0%)	0 (0.0%)	4.28	0 (0.0%)	0 (0.0%)	2 (4.0%)	33 (66.0%)	14 (28.0%)	1 (2.0%)	4.32	0 (0.0%)	0 (0.0%)	2 (4.0%)	31 (62.0%)	16 (32.0%)	1 (2.0%)
臨 港	1.02	212 (97.7%)	5 (2.3%)	0 (0.0%)	0 (0.0%)	0 (0.0%)	0 (0.0%)	1.30	178 (82.0%)	13 (6.0%)	25 (11.5%)	1 (0.5%)	0 (0.0%)	0 (0.0%)	1.32	178 (82.0%)	13 (6.0%)	22 (10.1%)	4 (1.8%)	0 (0.0%)	0 (0.0%)
芝	1.00	140 (100.0%)	0 (0.0%)	0 (0.0%)	0 (0.0%)	0 (0.0%)	0 (0.0%)	2.54	39 (27.9%)	34 (24.3%)	37 (26.4%)	16 (11.4%)	11 (7.9%)	3 (2.1%)	2.56	37 (26.4%)	36 (25.7%)	35 (25.0%)	18 (12.9%)	11 (7.9%)	3 (2.1%)
麻 布	1.00	58 (100.0%)	0 (0.0%)	0 (0.0%)	0 (0.0%)	0 (0.0%)	0 (0.0%)	1.78	23 (39.7%)	26 (44.8%)	8 (13.8%)	1 (1.7%)	0 (0.0%)	0 (0.0%)	1.83	22 (37.9%)	25 (43.1%)	10 (17.2%)	1 (1.7%)	0 (0.0%)	0 (0.0%)
赤 坂	1.00	69 (100.0%)	0 (0.0%)	0 (0.0%)	0 (0.0%)	0 (0.0%)	0 (0.0%)	1.59	39 (56.5%)	21 (30.4%)	7 (10.1%)	2 (2.9%)	0 (0.0%)	0 (0.0%)	1.67	34 (49.3%)	26 (37.7%)	7 (10.1%)	2 (2.9%)	0 (0.0%)	0 (0.0%)
高 輪	1.00	93 (100.0%)	0 (0.0%)	0 (0.0%)	0 (0.0%)	0 (0.0%)	0 (0.0%)	1.73	49 (52.7%)	26 (28.0%)	12 (12.9%)	6 (6.5%)	0 (0.0%)	0 (0.0%)	1.82	42 (45.2%)	32 (34.4%)	13 (14.0%)	6 (6.5%)	0 (0.0%)	0 (0.0%)
品 川	1.18	117 (84.8%)	17 (12.3%)	4 (2.9%)	0 (0.0%)	0 (0.0%)	0 (0.0%)	1.86	62 (44.9%)	49 (35.5%)	18 (13.0%)	5 (3.6%)	1 (0.7%)	3 (2.2%)	2.14	41 (29.7%)	52 (37.7%)	36 (26.1%)	5 (3.6%)	1 (0.7%)	2 (2.2%)
大 井	1.20	127 (79.9%)	32 (20.1%)	0 (0.0%)	0 (0.0%)	0 (0.0%)	0 (0.0%)	1.28	130 (81.8%)	19 (11.9%)	4 (2.5%)	6 (3.8%)	0 (0.0%)	0 (0.0%)	1.43	113 (71.1%)	29 (18.2%)	11 (6.9%)	6 (3.8%)	0 (0.0%)	0 (0.0%)
荏 原	1.58	37 (41.6%)	52 (58.4%)	0 (0.0%)	0 (0.0%)	0 (0.0%)	0 (0.0%)	1.12	83 (93.3%)	3 (3.4%)	1 (1.1%)	2 (2.2%)	0 (0.0%)	0 (0.0%)	1.88	18 (20.2%)	67 (75.3%)	1 (1.1%)	3 (3.4%)	0 (0.0%)	0 (0.0%)
大 森	1.51	218 (67.3%)	51 (15.7%)	51 (15.7%)	4 (1.2%)	0 (0.0%)	0 (0.0%)	1.27	249 (76.9%)	66 (20.4%)	6 (1.9%)	3 (0.9%)	0 (0.0%)	0 (0.0%)	1.56	217 (67.0%)	37 (11.4%)	65 (20.1%)	5 (1.5%)	0 (0.0%)	0 (0.0%)
田 園 調 布	1.31	155 (77.9%)	26 (13.1%)	18 (9.0%)	0 (0.0%)	0 (0.0%)	0 (0.0%)	1.11	179 (89.9%)	18 (9.0%)	2 (1.0%)	0 (0.0%)	0 (0.0%)	0 (0.0%)	1.32	156 (78.4%)	23 (11.6%)	20 (10.1%)	0 (0.0%)	0 (0.0%)	0 (0.0%)
満 田	1.46	301 (71.5%)	52 (12.4%)	61 (14.5%)	7 (1.7%)	0 (0.0%)	0 (0.0%)	1.32	321 (76.2%)	74 (17.6%)	21 (5.0%)	2 (0.5%)	3 (0.7%)	0 (0.0%)	1.62	269 (63.9%)	56 (13.3%)	88 (20.9%)	5 (1.2%)	3 (0.7%)	0 (0.0%)
矢 口	2.17	36 (28.6%)	37 (29.4%)	48 (38.1%)	5 (4.0%)	0 (0.0%)	0 (0.0%)	2.02	40 (31.7%)	64 (50.8%)	9 (7.1%)	5 (4.0%)	8 (6.3%)	0 (0.0%)	2.78	9 (7.1%)	35 (27.8%)	65 (51.6%)	9 (7.1%)	8 (6.3%)	0 (0.0%)
目 黒	1.14	206 (86.2%)	33 (13.8%)	0 (0.0%)	0 (0.0%)	0 (0.0%)	0 (0.0%)	1.12	216 (90.4%)	18 (7.5%)	4 (1.7%)	1 (0.4%)	0 (0.0%)	0 (0.0%)	1.32	170 (71.1%)	63 (26.4%)	4 (1.7%)	2 (0.8%)	0 (0.0%)	0 (0.0%)
世 田 谷	1.31	242 (69.1%)	108 (30.9%)	0 (0.0%)	0 (0.0%)	0 (0.0%)	0 (0.0%)	1.02	344 (98.3%)	6 (1.7%)	0 (0.0%)	0 (0.0%)	0 (0.0%)	0 (0.0%)	1.19	285 (81.4%)	65 (18.6%)	0 (0.0%)	0 (0.0%)	0 (0.0%)	0 (0.0%)
玉 川	1.08	238 (92.2%)	20 (7.8%)	0 (0.0%)	0 (0.0%)	0 (0.0%)	0 (0.0%)	1.00	258 (100.0%)	0 (0.0%)	0 (0.0%)	0 (0.0%)	0 (0.0%)	0 (0.0%)	1.00	257 (99.6%)	1 (0.4%)	0 (0.0%)	0 (0.0%)	0 (0.0%)	0 (0.0%)
成 城	1.02	326 (98.5%)	5 (1.5%)	0 (0.0%)	0 (0.0%)	0 (0.0%)	0 (0.0%)	1.00	331 (100.0%)	0 (0.0%)	0 (0.0%)	0 (0.0%)	0 (0.0%)	0 (0.0%)	1.01	327 (98.8%)	4 (1.2%)	0 (0.0%)	0 (0.0%)	0 (0.0%)	0 (0.0%)
渋 谷	1.03	237 (96.7%)	8 (3.3%)	0 (0.0%)	0 (0.0%)	0 (0.0%)	0 (0.0%)	1.49	156 (63.7%)	60 (24.5%)	28 (11.4%)	1 (0.4%)	0 (0.0%)	0 (0.0%)	1.70	106 (43.3%)	107 (43.7%)	31 (12.7%)	1 (0.4%)	0 (0.0%)	0 (0.0%)
四 谷	1.04	49 (96.1%)	2 (3.9%)	0 (0.0%)	0 (0.0%)	0 (0.0%)	0 (0.0%)	1.69	27 (52.9%)	14 (27.5%)	9 (17.6%)	1 (2.0%)	0 (0.0%)	0 (0.0%)	1.82	22 (43.1%)	17 (33.3%)	11 (21.6%)	1 (2.0%)	0 (0.0%)	0 (0.0%)
牛 込	1.02	82 (97.6%)	2 (2.4%)	0 (0.0%)	0 (0.0%)	0 (0.0%)	0 (0.0%)	1.44	49 (58.3%)	33 (39.3%)	2 (2.4%)	0 (0.0%)	0 (0.0%)	0 (0.0%)	1.74	27 (32.1%)	52 (61.9%)	5 (6.0%)	0 (0.0%)	0 (0.0%)	0 (0.0%)
新 宿	1.04	152 (95.6%)	7 (4.4%)	0 (0.0%)	0 (0.0%)	0 (0.0%)	0 (0.0%)	1.79	75 (47.2%)	55 (34.6%)	18 (11.3%)	9 (5.7%)	2 (1.3%)	0 (0.0%)	2.04	39 (24.5%)	88 (55.3%)	21 (13.2%)	9 (5.7%)	2 (1.3%)	0 (0.0%)
中 野	1.21	81 (78.6%)	22 (21.4%)	0 (0.0%)	0 (0.0%)	0 (0.0%)	0 (0.0%)	1.11	92 (89.3%)	11 (10.7%)	0 (0.0%)	0 (0.0%)	0 (0.0%)	0 (0.0%)	1.63	38 (36.9%)	65 (63.1%)	0 (0.0%)	0 (0.0%)	0 (0.0%)	0 (0.0%)
野 方	1.30	97 (69.8%)	42 (30.2%)	0 (0.0%)	0 (0.0%)	0 (0.0%)	0 (0.0%)	1.01	138 (99.3%)	1 (0.7%)	0 (0.0%)	0 (0.0%)	0 (0.0%)	0 (0.0%)	1.18	114 (82.0%)	25 (18.0%)	0 (0.0%)	0 (0.0%)	0 (0.0%)	0 (0.0%)
杉 並	1.28	223 (72.4%)	85 (27.6%)	0 (0.0%)	0 (0.0%)	0 (0.0%)	0 (0.0%)	1.01	304 (98.7%)	4 (1.3%)	0 (0.0%)	0 (0.0%)	0 (0.0%)	0 (0.0%)	1.19	249 (80.8%)	59 (19.2%)	0 (0.0%)	0 (0.0%)	0 (0.0%)	0 (0.0%)
荻 窪	1.11	211 (88.7%)	27 (11.3%)	0 (0.0%)	0 (0.0%)	0 (0.0%)	0 (0.0%)	1.01	235 (98.7%)	3 (1.3%)	0 (0.0%)	0 (0.0%)	0 (0.0%)	0 (0.0%)	1.06	223 (93.7%)	15 (6.3%)	0 (0.0%)	0 (0.0%)	0 (0.0%)	0 (0.0%)
小 石 川	1.01	102 (99.0%)	1 (1.0%)	0 (0.0%)	0 (0.0%)	0 (0.0%)	0 (0.0%)	1.28	75 (72.8%)	27 (26.2%)	1 (1.0%)	0 (0.0%)	0 (0.0%)	0 (0.0%)	1.46	58 (56.3%)	43 (41.7%)	2 (1.9%)	0 (0.0%)	0 (0.0%)	0 (0.0%)
本 郷	1.01	74 (98.7%)	1 (1.3%)	0 (0.0%)	0 (0.0%)	0 (0.0%)	0 (0.0%)	1.41	48 (64.0%)	23 (30.7%)	4 (5.3%)	0 (0.0%)	0 (0.0%)	0 (0.0%)	1.60	36 (48.0%)	33 (44.0%)	6 (8.0%)	0 (0.0%)	0 (0.0%)	0 (0.0%)
豊 島	1.15	90 (84.9%)	16 (15.1%)	0 (0.0%)	0 (0.0%)	0 (0.0%)	0 (0.0%)	1.50	61 (57.5%)	37 (34.9%)	8 (7.5%)	0 (0.0%)	0 (0.0%)	0 (0.0%)	1.84	28 (26.4%)	68 (64.2%)	9 (8.5%)	1 (0.9%)	0 (0.0%)	0 (0.0%)
池 袋	1.44	57 (56.4%)	44 (43.6%)	0 (0.0%)	0 (0.0%)	0 (0.0%)	0 (0.0%)	1.29	83 (82.2%)	9 (8.9%)	7 (6.9%)	2 (2.0%)	0 (0.0%)	0 (0.0%)	1.74	38 (37.6%)	54 (53.5%)	6 (5.9%)	3 (3.0%)	0 (0.0%)	0 (0.0%)
王 子	2.06	25 (25.8%)	43 (44.3%)	27 (27.8%)	2 (2.1%)	0 (0.0%)	0 (0.0%)	1.76	42 (43.3%)	36 (37.1%)	19 (19.6%)	0 (0.0%)	0 (0.0%)	0 (0.0%)	2.36	21 (21.6%)	22 (22.7%)	52 (53.6%)	2 (2.1%)	0 (0.0%)	0 (0.0%)
赤 羽	1.84	78 (48.1%)	35 (21.6%)	46 (28.4%)	3 (1.9%)	0 (0.0%)	0 (0.0%)	1.43	111 (68.5%)	38 (23.5%)	8 (4.9%)	5 (3.1%)	0 (0.0%)	0 (0.0%)	1.95	60 (37.0%)	60 (37.0%)	32 (19.8%)	10 (6.2%)	0 (0.0%)	0 (0.0%)
滝 野 川	1.40	53 (64.6%)	25 (30.5%)	4 (4.9%)	0 (0.0%)	0 (0.0%)	0 (0.0%)	1.23	67 (81.7%)	11 (13.4%)	4 (4.9%)	0 (0.0%)	0 (0.0%)	0 (0.0%)	1.56	46 (56.1%)	27 (32.9%)	8 (9.8%)	1 (1.2%)	0 (0.0%)	0 (0.0%)
板 橋	1.07	148 (93.1%)	11 (6.9%)	0 (0.0%)	0 (0.0%)	0 (0.0%)	0 (0.0%)	1.04	153 (96.2%)	6 (3.8%)	0 (0.0%)	0 (0.									

◆時季別、構造別出火危険度一覧表

冬は、ストーブなどの暖房器具を使用するため、夏に比べて出火危険度が高く、また、夕方は食事の準備で火気を使用するため、昼に比べて出火危険度が高い傾向にあります。このため、冬の夕方を想定したケースの出火危険度が最も高くなっています。

ランク別メッシュ数（上段：メッシュ数、下段：ランク別の割合）

	時季	木造建築物からの出火危険度								非木造建築物からの出火危険度								総合出火危険度							
		平均	低 ← → 高						平均	低 ← → 高						平均	低 ← → 高								
			1	2	3	4	5	6		1	2	3	4	5	6		1	2	3	4	5	6			
特別区	冬夕方	1.66 (63.0%)	6,611 (14.4%)	1,513 (16.5%)	1,731 (6.0%)	630 (0.0%)	2 (0.0%)	1	1.45	7,533 (71.8%)	1,729 (16.5%)	821 (7.8%)	316 (3.0%)	80 (0.8%)	9 (0.1%)	1.89	5,132 (48.9%)	2,295 (21.9%)	2,280 (21.7%)	684 (6.5%)	88 (0.8%)	9 (0.1%)			
	冬昼	1.35 (75.3%)	7,899 (14.2%)	1,487 (10.3%)	1,081 (0.2%)	21 (0.0%)	0 (0.0%)	0	1.31	8,334 (79.5%)	1,346 (12.8%)	566 (5.4%)	182 (1.7%)	53 (0.5%)	7 (0.1%)	1.56	6,491 (61.9%)	2,467 (23.5%)	1,256 (12.0%)	213 (2.0%)	54 (0.5%)	7 (0.1%)			
	夏夕方	1.29 (78.1%)	8,194 (15.0%)	1,575 (6.8%)	713 (0.1%)	6 (0.0%)	0 (0.0%)	0	1.19	9,162 (87.4%)	838 (8.0%)	361 (3.4%)	111 (1.1%)	10 (0.1%)	6 (0.1%)	1.40	7,377 (70.3%)	2,192 (20.9%)	773 (7.4%)	128 (1.2%)	12 (0.1%)	6 (0.1%)			
	夏昼	1.22 (81.4%)	8,540 (15.0%)	1,568 (3.6%)	378 (0.0%)	2 (0.0%)	0 (0.0%)	0	1.11	9,591 (91.4%)	696 (6.6%)	169 (1.6%)	20 (0.2%)	6 (0.1%)	6 (0.1%)	1.27	8,038 (76.6%)	2,075 (19.8%)	342 (3.3%)	18 (0.2%)	9 (0.1%)	6 (0.1%)			

	時季	木造建築物からの出火危険度								非木造建築物からの出火危険度								総合出火危険度							
		平均	低 ← → 高						平均	低 ← → 高						平均	低 ← → 高								
			1	2	3	4	5	6		1	2	3	4	5	6		1	2	3	4	5	6			
多摩地区	冬夕方	1.01	18,827 (99.2%)	151 (0.8%)	3 (0.0%)	0 (0.0%)	0 (0.0%)	0	1.00	18,935 (99.8%)	40 (0.2%)	3 (0.0%)	3 (0.0%)	0 (0.0%)	0	1.01	18,894 (99.5%)	79 (0.4%)	5 (0.0%)	3 (0.0%)	0 (0.0%)	0			
	冬昼	1.00	18,971 (99.9%)	9 (0.0%)	1 (0.0%)	0 (0.0%)	0 (0.0%)	0	1.00	18,949 (99.8%)	26 (0.1%)	3 (0.0%)	3 (0.0%)	0 (0.0%)	0	1.00	18,939 (99.8%)	35 (0.2%)	4 (0.0%)	3 (0.0%)	0 (0.0%)				
	夏夕方	1.00	18,974 (100.0%)	6 (0.0%)	1 (0.0%)	0 (0.0%)	0 (0.0%)	0	1.00	18,968 (99.9%)	7 (0.0%)	3 (0.0%)	3 (0.0%)	0 (0.0%)	0	1.00	18,967 (99.9%)	8 (0.0%)	3 (0.0%)	3 (0.0%)	0 (0.0%)				
	夏昼	1.00	18,974 (100.0%)	6 (0.0%)	1 (0.0%)	0 (0.0%)	0 (0.0%)	0	1.00	18,968 (99.9%)	7 (0.0%)	3 (0.0%)	3 (0.0%)	0 (0.0%)	0	1.00	18,967 (99.9%)	8 (0.0%)	3 (0.0%)	3 (0.0%)	0 (0.0%)				

	時季	木造建築物からの出火危険度								非木造建築物からの出火危険度								総合出火危険度							
		平均	低 ← → 高						平均	低 ← → 高						平均	低 ← → 高								
			1	2	3	4	5	6		1	2	3	4	5	6		1	2	3	4	5	6			
東京都	冬夕方	1.24 (86.3%)	25,438 (5.6%)	1,664 (5.9%)	1,734 (2.1%)	630 (0.0%)	2 (0.0%)	1	1.16 (89.8%)	26,468 (6.0%)	1,769 (2.8%)	824 (1.1%)	319 (0.3%)	80 (0.0%)	9	1.32 (81.5%)	24,026 (8.1%)	2,374 (7.8%)	2,285 (2.3%)	687 (0.3%)	88 (0.0%)	9			
	冬昼	1.13 (91.2%)	26,870 (5.1%)	1,496 (3.7%)	1,082 (0.1%)	21 (0.0%)	0 (0.0%)	0	1.11 (92.6%)	27,283 (4.7%)	1,372 (1.9%)	569 (0.6%)	185 (0.2%)	53 (0.0%)	7	1.20 (86.3%)	25,430 (8.5%)	2,502 (4.3%)	1,260 (0.7%)	216 (0.2%)	54 (0.0%)	7			
	夏夕方	1.10 (92.2%)	27,168 (5.4%)	1,581 (2.4%)	714 (0.0%)	6 (0.0%)	0 (0.0%)	0	1.07 (95.5%)	28,130 (2.9%)	845 (1.2%)	364 (0.4%)	114 (0.0%)	10 (0.0%)	6	1.14 (89.4%)	26,344 (7.5%)	2,200 (2.6%)	776 (0.4%)	131 (0.0%)	12 (0.0%)	6			
	夏昼	1.08 (93.4%)	27,514 (5.3%)	1,574 (1.3%)	379 (0.0%)	2 (0.0%)	0 (0.0%)	0	1.04 (96.9%)	28,559 (2.4%)	703 (0.6%)	172 (0.1%)	23 (0.0%)	6 (0.0%)	6	1.10 (91.6%)	27,005 (7.1%)	2,083 (1.2%)	345 (0.1%)	21 (0.0%)	9 (0.0%)	6			

◆出火危険度測定手法の概要

地震時における出火要因として、①火気器具、②電気関係、③化学薬品、④工業炉、⑤危険物施設、⑥L Pガスボンベ及び高圧ガス施設を取り上げ、これらの出火要因ごとに出火機構の分析を行い、出火要因別の出火危険度を測定しました。

(1) 火気器具・電気関係

- i 各家庭や事業所で使用している石油ストーブやガスコンロなどの火気器具や、電気ストーブや電気コンロなどの電熱器具について、過去の地震事例及び火気・電熱器具の使用状況をもとに、イベント・ツリー・アナリシス（E T A）を用いて出火機構を分析しました。
- ii 兵庫県南部地震をはじめとする過去の事例や振動実験などをもとに、出火機構中の各事象間の生起確率を設定し、これらから各火気器具や電熱器具の地震による震度ごとの出火率を算定しました。
- iii 住宅や事業所に対する火気電気使用実態調査を行い、建物の用途・器具・時間帯別に、火気・電気の使用状況を把握し、震度別の出火率を設定しました。
- iv 国勢調査や事業所・企業統計調査などの結果から、町丁目及びメッシュ別に、建築物の階層別、立地階別用途数を算定しました。
- v 以上のほか、建築物が圧壊するような状況での出火、テレビや冷蔵庫などの電気器具からの出火、屋内配線、配電盤などの配線からの出火、漏えいしたガスへの引火による出火の危険性については、兵庫県南部地震などの地震火災事例をもとに、震度別の出火率を算定しました。
- vi 地域危険度測定の設定方法による地表速度から算出した計測震度をもとに、各用途の所在する建築物の階層、立地階を考慮し、さらに火気始末率や初期消火率などを考慮して用途別の出火危険度を算定しました。なお、今回の出火危険度測定的前提となる震度分布を図 1 に示します。

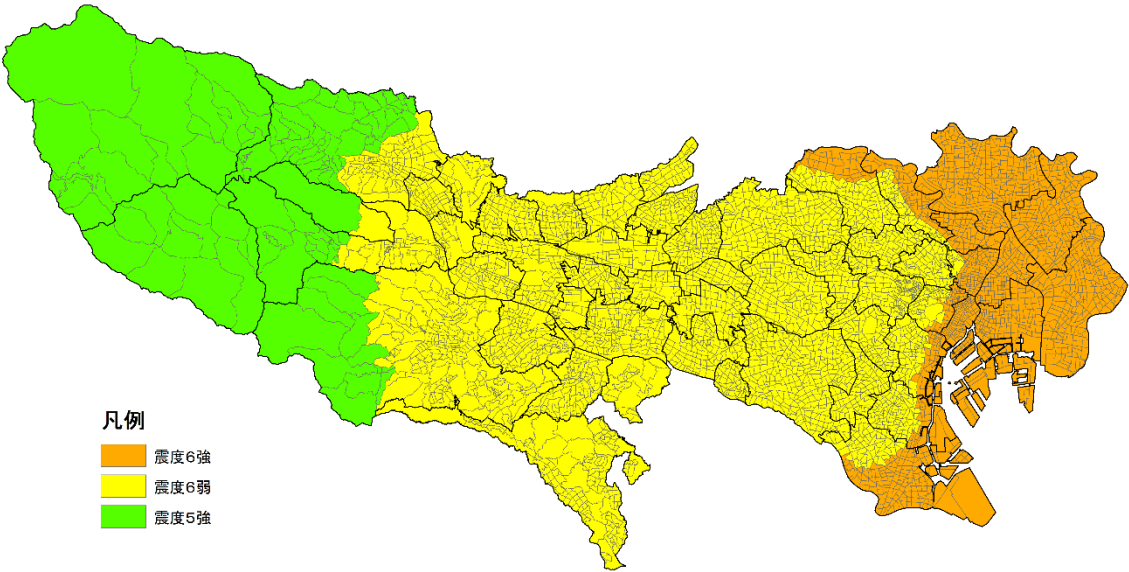


図 1 今回の出火危険度測定的前提となる震度分布図

（「地震に関する地域危険度測定調査（第 8 回）」（東京都都市整備局、平成 30 年）の地盤分類・増幅率に基づき設定）

(2) 化学薬品

- i 過去の地震事例や実験などをもとに E T A を用いて出火機構を分析し、出火率を算定しました。
- ii 地域に分布する少量危険物を保有する高校、大学、自然科学研究機関の数を考慮して出火危険度を算定しました。

(3) 工業炉

- i 東京都内における工業炉の分布、過去の地震事例、ヒアリング、アンケートなどの調査を実施して E T A により出火機構を分析し、出火率を求めました。
- ii 地域に分布する工業炉の数を考慮して出火危険度を算定しました。

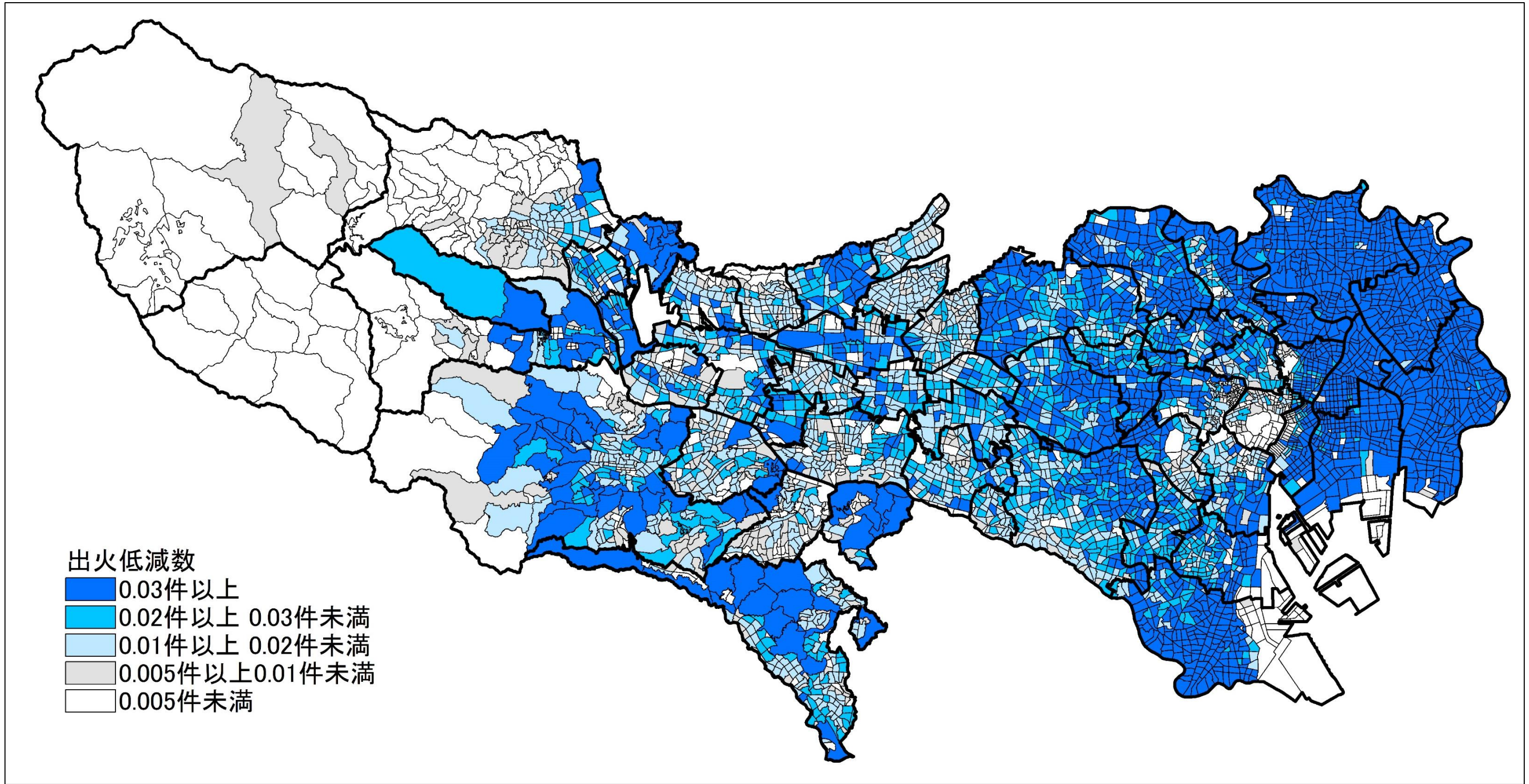
(4) 危険物施設

- i 過去の地震事例、ヒアリング、アンケートなどを実施し、地震動による危険物流出から出火に至るまでの出火機構を危険物施設別に E T A により分析し、出火率を求めました。
- ii 地域に分布する危険物施設の数を考慮して出火危険度を算定しました。

(5) L P ガスボンベ、高圧ガス施設

- i L P ガスボンベ
L P ガスボンベからの出火機構を、「地震動による L P ガスボンベの転倒、L P ガス漏洩、何らかの火源による出火」と考え、過去の地震事例を踏まえて震度別の出火率を求め、L P ガス消費者数を考慮して地域別に出火危険度を算定しました。
- ii 高圧ガス施設
高圧ガス施設からの出火は、貯蔵施設、配管及び容器別の出火機構を E T A により分析することで震度別の出火率を求め、高圧ガス施設の分布資料を用いて地域別に出火危険度を算定しました。

◆ 出火件数低減方策



- 【概 要】
- どのような対策を行えば地震発生時に出火件数を減らすことができるのかという観点で下記の4つの対策の効果を試算しました。
- (1) 家具類の転倒・落下・移動防止対策（以下「家具転対策」）を行う
地震火災の要因として、揺れにより転倒した家具類が火気器具を押し倒し、散乱した可燃物に接触するケースや、電気器具に当たり、電源を入れてしまうケース等での出火が考えられます。家具転対策に取り組むことで、揺れにより転倒した家具類が引き起こす出火を低減することができます。
 - (2) 防火防災訓練に参加する
防火防災訓練に参加することで、初期消火の成功率の向上に繋がり、地震火災は低減します。地震時は、火災を早期に発見し初期消火を行うことで火災が大規模に拡大するのを防ぐことができます。
 - (3) 不使用時には、電熱器具の電源プラグをコンセントから抜く
電源プラグをコンセントに接続したままだと、使用していない電気器具が揺れで転倒した際や、転倒した家具類がスイッチに当たった際に電源が入り、可燃物と接触して出火した事例があります。使用しない電熱器具の電源プラグをコンセントから抜いておくことで、地震火災を低減させることができます。
 - (4) 出火危険に対して安全性の高い器具の使用、古い器具の買い替え
空焚き防止機能付きの熱帯魚用ヒーターなど、安全性の高い器具を使用することや、石油ストーブの耐震自動消火装置といった地震火災抑制機能が搭載されている器具を、確実に作動するよう古い器具を買い替えることは、地震火災を減らすことにつながります。

◆ 出火危険度測定フロー

