

Fire Dept. mascot "Cue-tah"

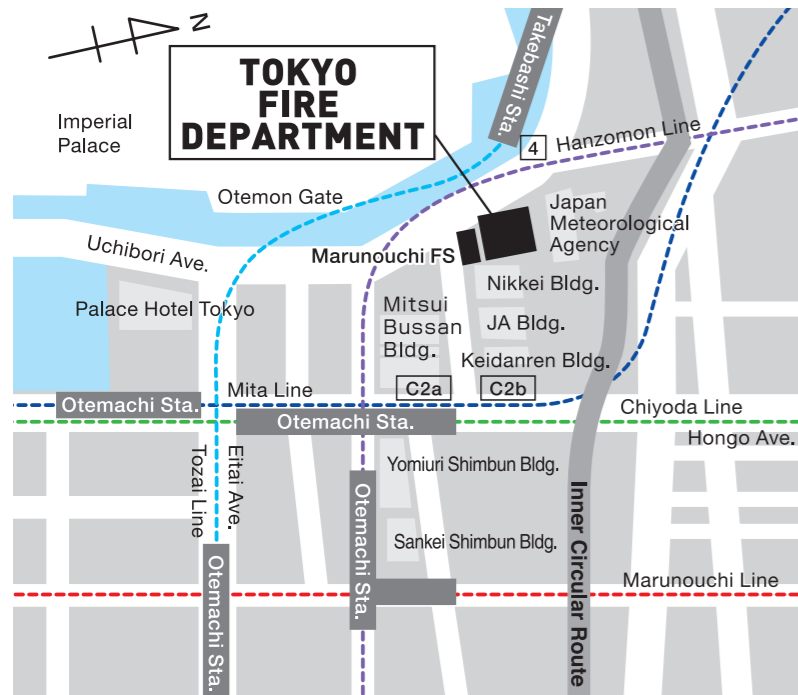
The future fire-rescue hero detecting every disaster with his special yellow antennas.



東京の消防

FIRE SERVICE IN TOKYO

TFD HQ: Map and Photo



Access

Near Takebashi Sta. (Gate 4, Tozai Line)
One-minute walk from Otemachi Sta. (Gate C2a or C2b)
(Chiyoda, Hanzomon, Marunouchi, or Mita Line)

Otemachi 1-3-5, Chiyoda-ku, Tokyo 100-8119 Phone: 03-3212-2111

<https://www.tfd.metro.tokyo.lg.jp>



TOKYO FIRE DEPARTMENT

東京消防庁

INDEX

03 Fire Service in Tokyo

Firefighters Face Up to Disasters
EMS Members Face Up to COVID and Heatstroke Victims
We Have More Daytime EMS Units

05 Organization

07 Apparatus for Emergencies

★Topic Fire Investigation Van

09 Rescue Apparatus

We Have More!

11 Aviation Fire Service/Port Fire Service

13 Fire

Fires & Fire Deaths / Home Fire Cause (2021)
Firefighting Units / ★Topic Pumper Member
Be Fire-safe! Home Fire Alarms

15 Rescue

Rescue Operations / Accident Type (2021)
Rescue Units/ ★Topic The 50th National Rescue Meet in TOKYO

17 Emergency Medical Service (EMS)

EMS Response / First-time patients (2021) / EMS Crews
First Aid / ★Topic First-aid Training Van
#7119 TFD Emergency Telephone Consultation Center
Tokyo EMS Guide

19 Command & Control Center

1-1-9 Calls / "Live 119"
1-1-9 Call Examples (FIRE-AMBULANCE)

21 For A Safer Tomorrow

Full-time and Volunteer Firefighters Education
Recruitment
Safety Promotion / Perfect Apparatus for Disaster Scenes

23 Fire Prevention

Amusement Area Safety
Evacuation Route Advice
Provision of Building Fire Safety Information /
Fire Safety Guidance in Restaurants
Advice on Gasoline Selling / Prevention of Electric Fires
The TFD SNS and Website Help You Learn about Fire Prevention

25 Disaster Preparedness

Home Fire Alarm
Home Fire and Life Safety Check
Keep Furniture from Falling and Moving
Enhance the Life Safety Action with Knowledge and Experience

27 Volunteer Fire Corps

Conditions to be a Member / Treatment and Payment / Volunteer Fire Corps Skills Course /
Deployment of Volunteer Fire Corps /
Volunteer Fire Corps Facilities /
Portable Pump Transporter
System for Enriching and Reinforcing
Volunteer Fire Corps' Organizational Power

29 We Go With You

TFD Band & TFD Color Guard
Fire Vehicle Sketching
Boys & Girls Fire Club (BFC)
★Topic Life Safety Information for Foreign Residents

31 We Give Information

TFD Official Website / Topic The TFD Map
TFD Official App/ SNS / Official TFD YouTube Channel
Newsletter: KOHO TOKYO SHOBO

33 Information

Fire Museum / Life Safety Learning Centers

34 Contact Information

Residents' Consultation /
Disaster Information Guide /
Fire Station Contact



Firefighters Face Up to Disasters

Some disasters are more difficult to handle than ever before.

The TFD has its personnel repeat training with the latest fire apparatus for the safety of Tokyo citizens.



Successive Transportation Caused by Covid-19 and Extreme Heat

Summer in 2022, during the time of increase in the number of ambulance runs, the number of ambulance runs drastically increased due to overlap of the heatwave and the 7th wave of COVID-19. In the TFD jurisdiction, the number of ambulances dispatched per day exceeded 3,000 consecutively. (In 2021: 2,038 on average per day)

Under these tightened on-scene situations, the TFD made every effort to solve the problem, i.e., additionally deployed spare ambulances.



Reinforcement of the Day-time Ambulance Units

We strengthened the day-time ambulance units during the day, when the demand of EMS service is high.



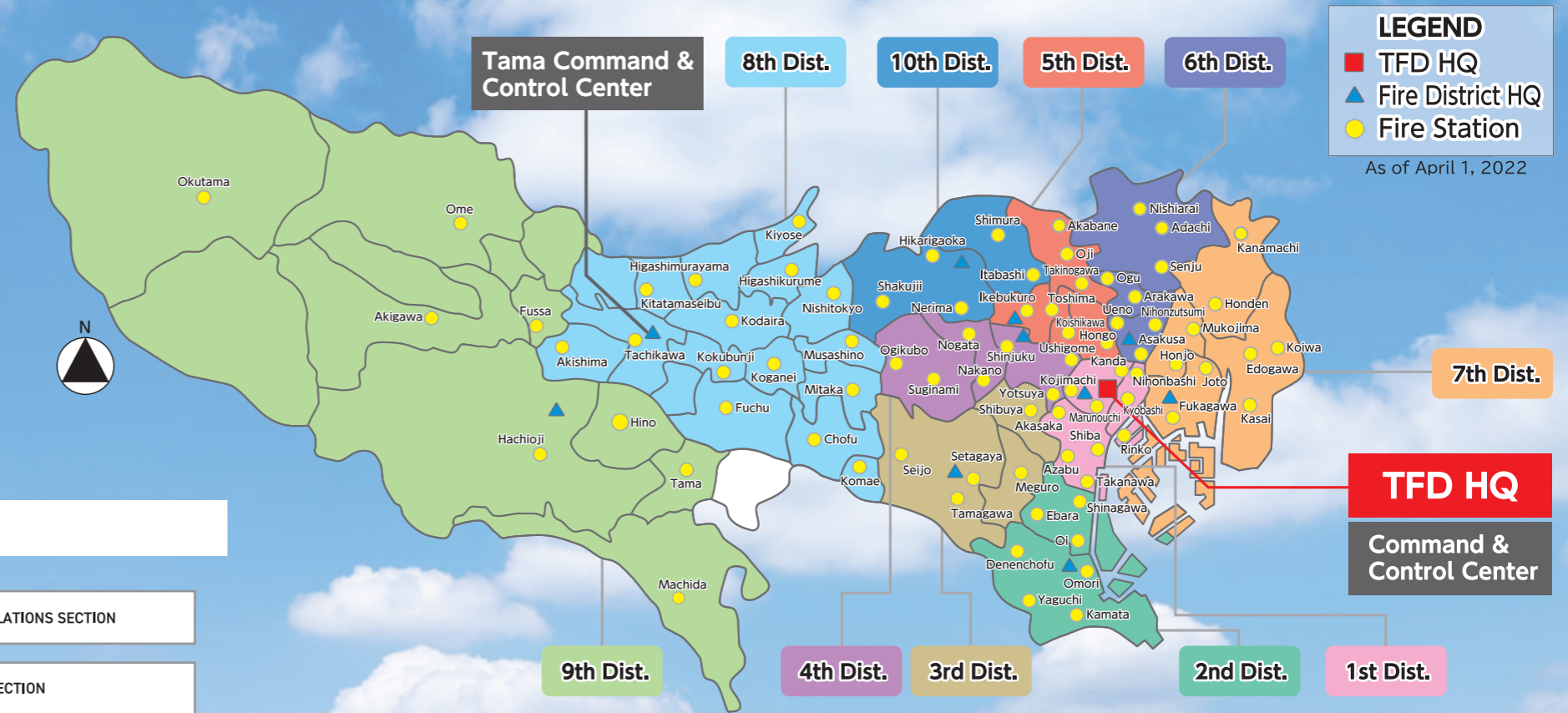
The operation begun on October in 2022 at the Ogikubo, Hikarigaoka, Shakujii and Nishiarai Fire Stations. (In 2019, the Ikebukuro Fire Station and in 2021, the Ebara, Itabashi and Kanamachi Fire Stations.)

Organization

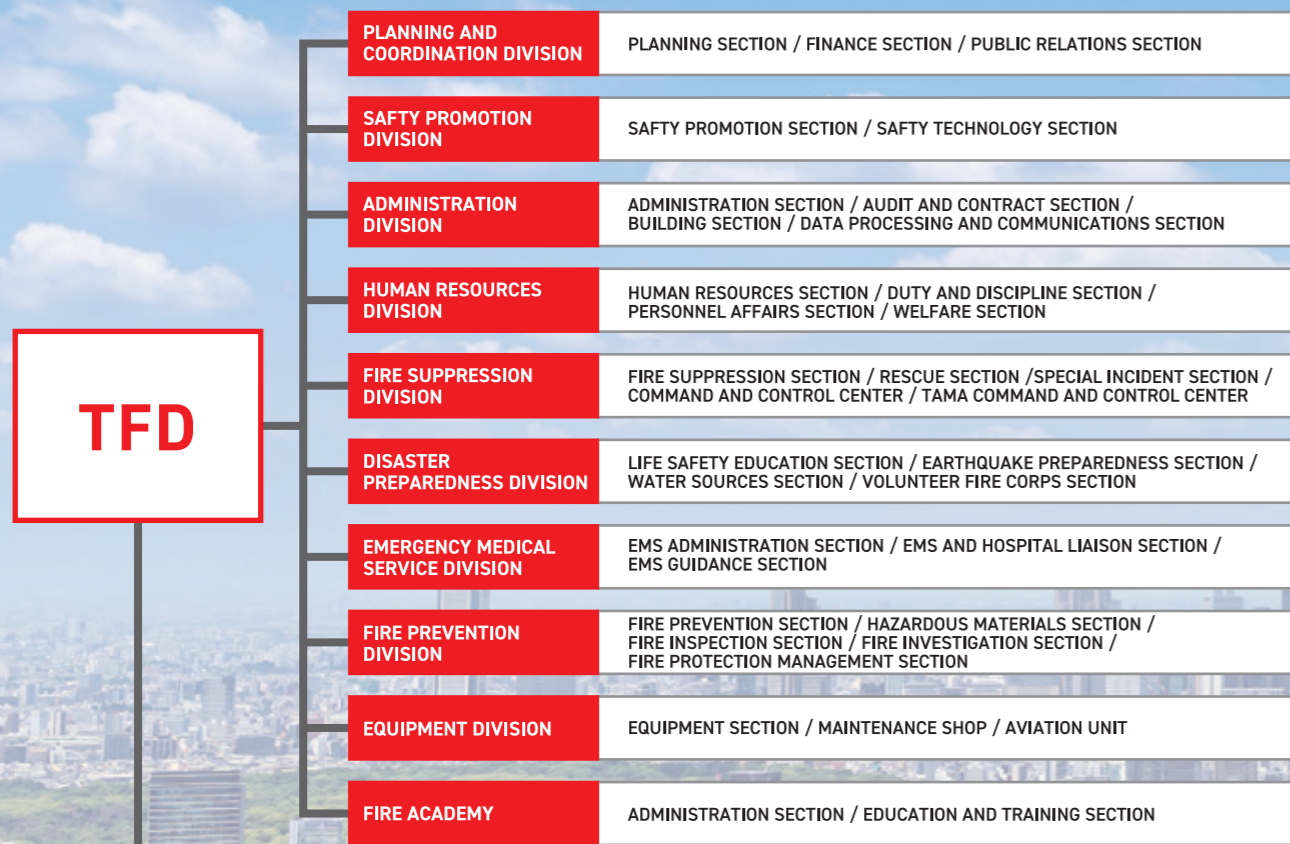
TFD Service Area

The TFD was established on March 7, 1948 as a municipal fire service organization, and protects Tokyo residents' lives and properties (exc. for the island areas and Inagi City).

About 18,600 TFD personnel work at fire and life safety for about 14,000,000 people in the urban and rural areas of about 1,770km² with a lot of high-rise apartment buildings, commercial facilities or mountains.



Make up



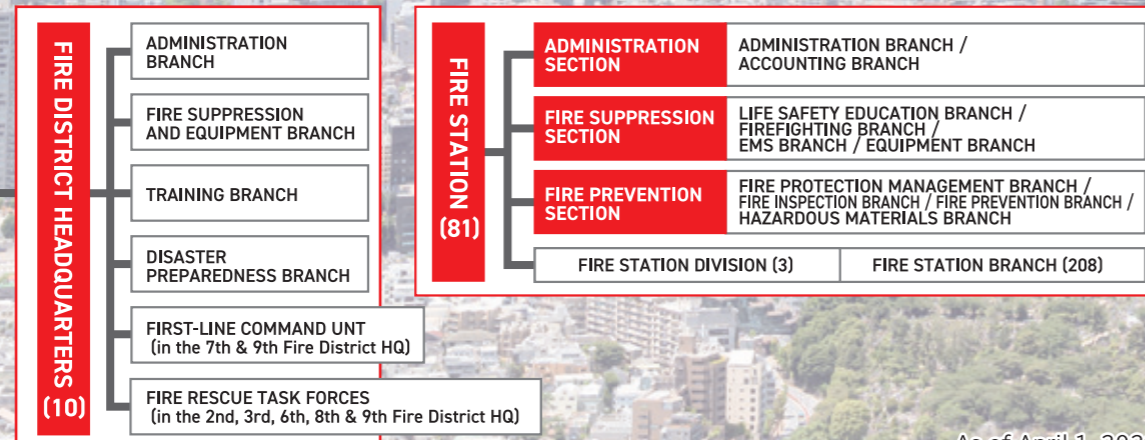
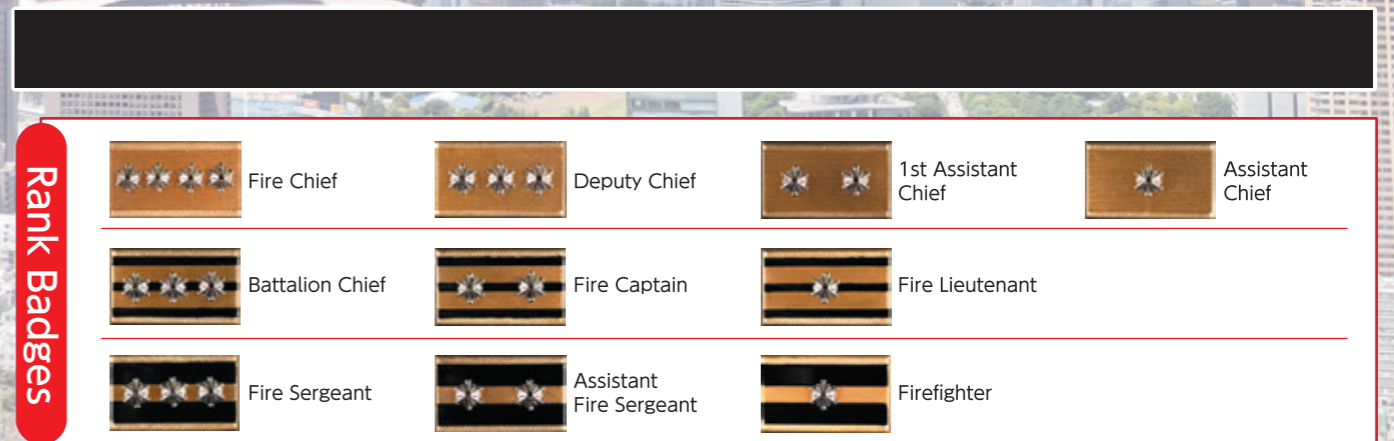
Resources

Each fire station has the latest fire apparatus, and is all the time ready for emergencies.

Personnel	18,655	Fire Station	81
Uniformed	18,233	Fire Station Division	3
Non-Uniformed	422	Fire Station Branch	208
		Fire Apparatus	2,009

As of April 1, 2022

Rank



As of April 1, 2022



Apparatus for Emergencies

The TFD has a variety of apparatus in its fire stations and other facilities for the immediate response to complex disasters.

Fire Engine



It is for firefighting with a pump drawing and shooting water from a hydrant or a cistern more than 2,000 liters or more per minute.

Water Tank Fire Engine



It has a 2,000-liter water tank for easier firefighting operations at places distant from water sources.

Foam Truck



It has a foam agent discharger to cope with gasoline and other hazmat fires.

Command Van ("one-box" type)



It is for on-scene commanding, fact-finding and operations control, provided with radios, a table, microphones, and others.

Firefighting Motorcycle



It is an off-road motorcycle responding to expressway / mountain accidents earlier than others.

First Arrival Vehicles



It is a small electric vehicle for the quick response in narrow road areas.

Ladder Truck



The TFD has 30-, and 40-meter ladder trucks as its conventional rescue / firefighting apparatus, and moreover articulated ladder trucks for difficult operations with utility pole wires or others standing ahead.

Aerial Platform



It is a refracting tower with a three-people rescue basket. It is capable of rescuing at a river, a canal or other low spots as well as rescuing and firefighting at mid-rise stories.

Squirt



It has a 22-meter, two-section boom water / foam tower for high-rise / hazmat fires.

Floodlight Wagon



It is used for nighttime operations, and as an emergency electric power supplier.

Topic Fire Investigation Van

The vehicle is for investigating fire causes on-scene. It has equipment needed for investigation and generators. Furthermore, identification and administrative duties are carried out inside.



▲View of identification work inside the vehicle.



▲Investigation equipment is loaded in the rear side of the vehicle.

Rescue Apparatus

Rescue Truck



It is a special rescue team vehicle with a winch, a self-elevating flood-light, a generator, about 500 rescue tools, and others.

Water Rescue Truck



It is a water rescue company vehicle to respond to port and river incidents. It has a scuba gear container, an outside equipment container, a lighting system, a shower space, rescue tools, and others.

Mountain Rescue Van



It is an off-road, four-wheel drive vehicle with great mobility. It has a roof carrier for a basket stretcher and other rescue tools with an automatic equipment shelf provided inside.

Special Incident Truck



It responds to radioactive, biochemical and other hazmat disasters. It has a self-elevating anemoscope, a self-elevating anemometer, a positive pressure main trainer (not for all vehicles), gas analyzers, a decontamination tent system, and others.

We Have More!



Drag Shovel



Tractor Shovel



Crane



Heavy Apparatus Carrier

Ambulance



Ambulance



It has advanced paramedic equipment and a vibration reducing bed, and provides larger space for patients and equipment than ever before.

Special Ambulance (Negative pressure type)



It is a high-standard vehicle for the patients with a suspected infectious disease. An openable bulkhead together with a negative pressure device are installed between the driver and the patients. In the vehicle, the air contaminated in the patient compartment can be purified to be released outside during first aid.

EV Ambulance (“one-box” type)



It is the electrically driven ambulance first brought in Japan’s EMS scene. Its autostretcher is of great use in handling a massive case.

Special Ambulance (Super Ambulance)



It is used for patient transportation and as a first-aid station. It provides an eight-bed space (about 40m²) by extending its body, right and left.



High-mobility Rescue Truck



Multi-purpose Road Accessor



High-performance Command Support Truck



Airboat

Aviation Fire Service



The Aviation Unit has eight helicopters: four medium aircrafts (Chidori, Kamome, Tsubame, Otaka) and four large ones (Hibari, Yurikamome, Konotori, Hakucho). They conduct firefighting, rescue, fact-finding and patient transportation.



▲Patient transportation



▲Cockpit



▲Firefighting

Large Helicopter



Hibari



Yurikamome



Konotori



Hakucho

Medium Helicopter



Chidori



Kamome



Tsubame



Otaka
*Otaka owned by Fire and Disaster Management Agency (FDMA).

Port Fire Service



The TFD has nine fireboats in Nihonbashi, Rinko and Takanawa Fire Stations. For the safety on the waters of Tokyo, they conduct firefighting, guard against port and marine fires, promote ship fire safety, and carry out rescue activities.



▲Miyakodori: A large boat for chemical fires.



▲Water rescue drill at Tokyo Harbor



▲Nighttime rescue

Large Boat



Oedo

Boat for Chemical Fire



Ariake



Kachidoki

Command Boat



Hayate

Rescue Boat



Harumi



Kiyosu



Hamakaze



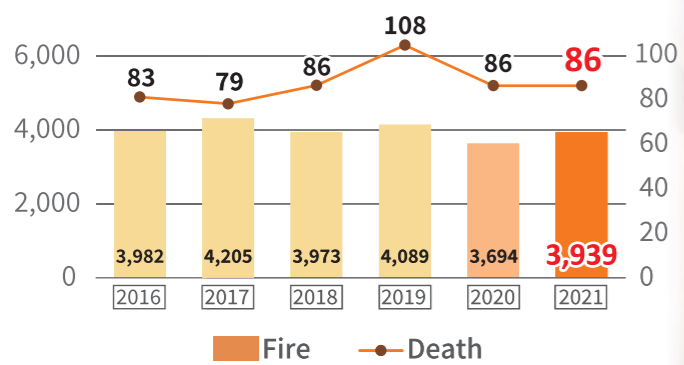
Shibuki

Fire



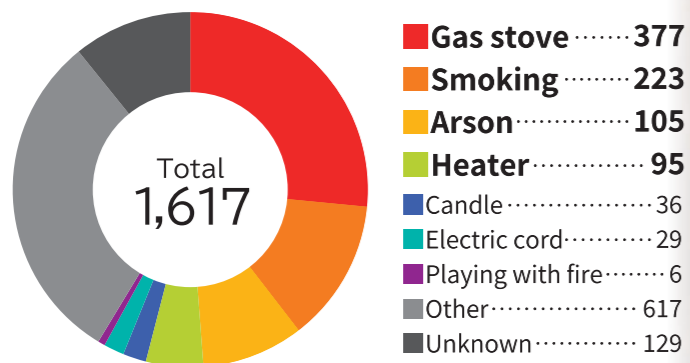
Firefighters, with firefighting as their main role, repeat training at their fire stations so that they can cope with emergencies quickly and properly.

Fire & Fire Death



※Preliminary Figures in 2022: 3,950 Fires and 91 Fire Casualties

Home Fire Causes (2021)



Pumper Unit



Pumper units mainly operate firefighting on-scene. Also, the members are part of the “PA (Pumper-Ambulance)” response to give first aid to patients before the arrival of an ambulance.

A-One Unit (Special Firefighting Team)



This is the firefighting unit with advanced operational abilities for handling complex and diversifying disasters.

Ladder Company



This is the unit that helps people out of upper floors, and discharge water for firefighting high above the ground as well.

Command Unit



As a commander taking a main role, the unit commands and controls other units dispatched to the fire scene.

First-line Safety Command Unit



At disaster scenes, the unit commands the safety management teams and controls safety of the whole disaster scene.

Topic Uniform for Pumper Members



Be Fire-safe! Home Fire Alarms

Home fire alarms detect fires quickly. Fire-retardant items don't catch fire with ease, keeping fire from spreading. Fire extinguishers can reduce fire damage. Keep them on hand at home for your safety.

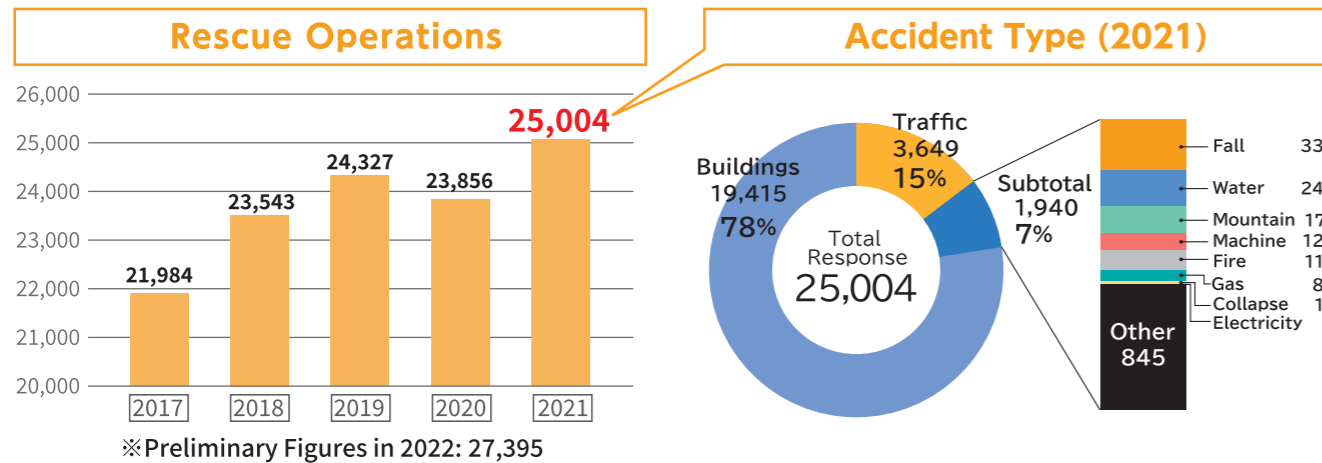
STOP!
Home Fires
Tips for Safety



Rescue



Specially trained rescuers take action with their expertise and equipment in response to fires, traffic accidents, chemical incidents, water accidents, mountain emergencies, and others.



Special Rescue Unit

The members respond to fires, traffic accidents, natural disasters, and others. The year 2021 marks the 50th anniversary of the founding of the special rescue unit system back in 1971.

【Deployment】 Kojimachi FS, Shiba FS, Kamata FS, Meguro FS, Setagaya FS, Shinjuku FS, Suginami FS, Toshima FS, Itabashi FS, Nerima FS, Shakuji FS, Ueno FS, Adachi FS, Fukagawa FS, Joto FS, Edogawa FS, Musashino FS, Fuchu FS, Higashikurume FS, Hachioji FS, Ome FS, Machida FS and Tama FS



▲Nagatacho Unit (Present)



▲Nagatacho Unit (in 1971)



▲Unit emblem

Fire Rescue Task Forces



The Forces respond to large-scale disasters such as building collapses and landslides. They conduct fire-fighting, rescue and EMS activities simultaneously on-scene.

【Deployment】
2nd, 3rd, 6th, 8th and 9th Fire District HQ

Water Rescue Unit



The unit conducts rescue operations for water accidents. It carries out for rescue activities, working together with fireboats and helicopters.

【Deployment】
Nihonbashi FS, Rinko FS, Omori FS, Adachi FS, Koiwa FS and Chofu FS

Mountain Rescue Unit



The unit conducts rescue operation for mountain climbing accidents. In the area where is dangerous for vehicles to enter, the unit and a helicopter work together for rescue activities.

【Deployment】
Hachioji FS, Ome FS, Akigawa FS and Okutama FS

Hazardous Materials Unit (HAZMAT Unit)



The unit responds to the incidents involving hazardous, poisonous and NBC substances. They conduct life-saving, leakage control, decontamination and so on.

※NBC stands for nuclear, biological and chemical.
【Deployment】
Akasaka FS, Oi FS, Hongo FS, Shimura FS, Senju FS, Joto FS, Mitaka FS, Hino FS and Fussa FS

Air Fire Rescue Task Forces



The forces respond to various disasters from the sky, such as emergencies at high-rise buildings and on isolated areas.

【Deployment】
Koto Aviation Center and Tama Aviation Center

TFD HQ Rescue Operation Forces



In the event of a large-scale natural disaster, as their mission, the Forces quickly confirm and comprehend disaster situations and conduct rescue operations with other units.

※配置状況・・・令和5年4月1日現在

Topic 50th National Rescue Meet

The Rescue Meet was held in Tachikawa City, Tokyo, in August, 2022. It was the 50th anniversary. Rescue elites all over Japan gathered and performed the results of their practice.

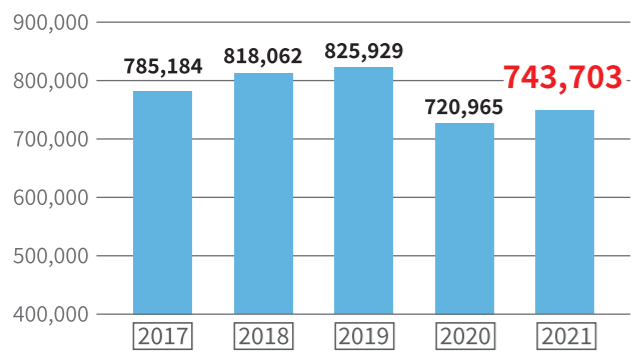


Emergency Medical Service (EMS)



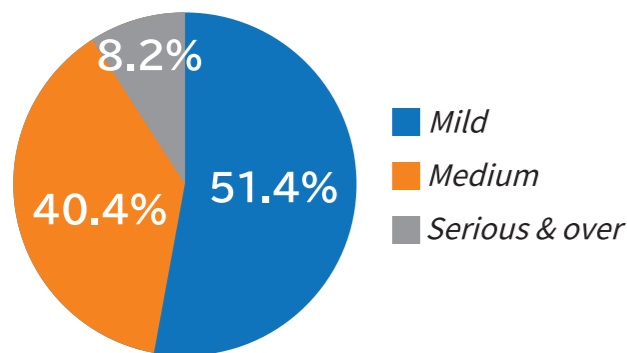
In the rapidly aging society, there will be a constant increase in the demand for EMS. The TFD increases the number of ambulance units in an organized way and conducts flexible operations in order to shorten the ambulance response time. Also, we call on the citizens of Tokyo for the proper use of ambulance service.

Changes in EMS Response



※Preliminary Figures in 2022: 872,101

First-time patients in the 2021 fiscal year



Ambulance Unit



There are paramedics assigned to all ambulance units to secure the system of the proper first aid treatment and swift transportation to the hospital.

Mobility Ambulance Unit



The units change their standby spots in response to EMS demands changed by timeframe to shorten the on-scene arrival time. Also, they are ready for diverse EMS cases such as mass-casualty incidents, infections, and NBC disasters.

Daytime Ambulance Unit



The units are in operation during daytime for the purpose of strengthening EMS demand measures. Additionally, the units enable members who have difficulty working 24 hours due to mothering and nursing take an active role in EMS duties.

Your Hands Save Lives

Bystanders, or passers-by who happen to be at the scene, may also save injured or sick people on the street, giving them first aid until the ambulance arrives. Learn first aid and be prepared for an emergency.

Learn First Aid

- TFD Official App
- TFD HP / E-learning
- First-aid Course
- Community Drill
- Official TFD YouTube Channel



TFD E-learning



First-aid Course

Topic First-aid Training Van

The vehicle is able to conduct first-aid training at events. It has CPR mannequins and AEDs.



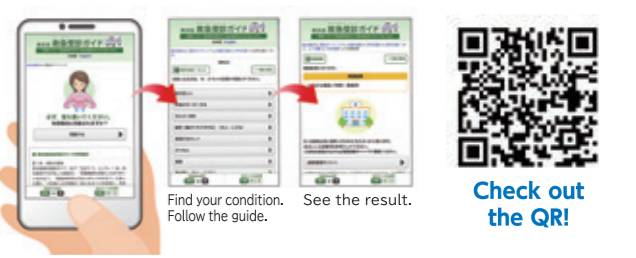
Hospital? Ambulance? Call #7119 for Advice.

The TFD Emergency Telephone Consultation Center gives immediate advice to sick/injured people in need of instant decision. The members (e.g., doctors, nurses and retired EMS personnel) work on a 24-hour basis.

TFD Emergency Telephone Consultation Center



On the Internet (TOKYO EMS GUIDE)



Command & Control Center



Two centers receive the 1-1-9 calls from within Tokyo.: the TFD HQ Command and Control Center in Chiyoda Ward (for Tokyo's 23 Wards) and the Tama Command and Control Center in Tachikawa City (for the Tama area). Besides 1-1-9 calls, the centers accept other cases such as the reports from the police and transportation agencies, emergency net calls (Net 119) and the EMS direct reporting system. ※Exc. Inagi City and island areas



1-1-9 Calls

Dispatch Orders

Dispatches (Responses)

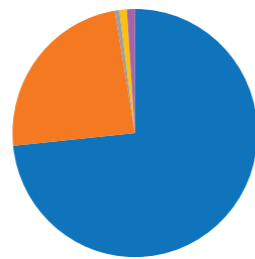
1-1-9 Calls (2021)

898,319

※About 2,460 calls per day / one call about every 35 seconds

※Preliminary Figures in 2022: 1,036,645

Number of 119 Reportings in 2021



- EMS Calls.....659,038
- Other (exc. disasters) 215,642
- Fire.....5,395
- Rescue.....8,768
- Fact checking &...9,476
hazard removal

119 Call Response in Multi-Languages

English, Chinese, Korean, Portuguese and Spanish are available in three-way talk via the translation center.

In addition to the oral approach, the Command and Control Centers have the visual information service "Live 119" on smartphone. It allows the center members to check the patients' condition and give first aid advice.

Live119



Call Calmly from a Safe Place.

FIRE

TFD	Caller
Tokyo Fire Department... Fire or ambulance?	Fire.
Please give the address.	(e.g.) Chiyoda-ku, Otemachi, O chome, O ban, O go desu.
What's on fire?	(e.g.) The curtain in the living room. * Please describe what is/are burning.

What if you don't know the address outdoors?

Some public phone booths, self-vending machines, utility poles and buildings have their address on them. Or, you can also make sure of the address at a convenience store. In addition, well-known buildings or crossroads can be clues, too.

AMBULANCE

TFD	Caller
Tokyo Fire Department... Fire or ambulance?	Ambulance.
Please give the address.	(e.g.) Chiyoda-ku, Otemachi, O chome, O ban, O go desu. OO Apartment Building ... Room O.
What happened?	(e.g.) My father is down and unconscious. * Please describe the situation.
Your name, please. (Ask for the phone number if needed.)	My name is OOO. My phone number is OOOO-OOOO.

Ambulance or not...? Call #7119
For non-emergency advice, please see page 34.

For A Safer Tomorrow



Full-time and Volunteer Firefighters Education

We provide the initial training (for newly recruited members), the specialized training (for rescuers, paramedics), the executive training (for supervisors), and so on. We also conduct the educational training for volunteer firefighters who play a leadership role in their community.



▲Newly employed firefighters practice wearing fire gear at recruit training



▲Technical education of the volunteer firefighters training

We Want You - We Create A Safer Tomorrow -

For the TFD system, exam and briefing, please visit the TFD Employment Website.



▲Newly employed firefighters in the Fire Academy

Promotion on Safety Measures

In order to prevent firefighting and EMS activities from serious accidents, the TFD members analyze causes of accidents and enhances recurrence prevention measures. They promote safety measures to reduce accidents in fire services.

Additionally, they conduct various studies with the scientific point of view, analyze fire causes, secure Tokyo citizens' life safety and enhance safety in firefighting operations.



▲Members learning lessons from the past disasters and cases



▲Combustion test at the Minamitama Disaster Preparedness Center



▲Experiment with a vibration generator



▲Fire analysis

Perfect Apparatus for Disaster Scenes

Inspections are given to vehicles and equipment. Besides, the members are in charge of maintenance around the clock so that they can rush to the scene to conduct on-site urgent check/repair for fire companies in case of the mechanical trouble at a disaster scene.



▲Ladder truck under maintenance



▲A mechanic doing maintenance on an ambulance



▲View of the maintenance shop

Fire Prevention



To prevent outbreak of a fire, the TFD puts effort into ensuring security and safety of the citizens of Tokyo. The TFD members conduct inspections and give fire safety advice for the greater safety of buildings and hazmat facilities. Moreover, they carry forward fire cause investigations and analyses.

Amusement Area Safety



▲Nighttime inspection at Kabukicho

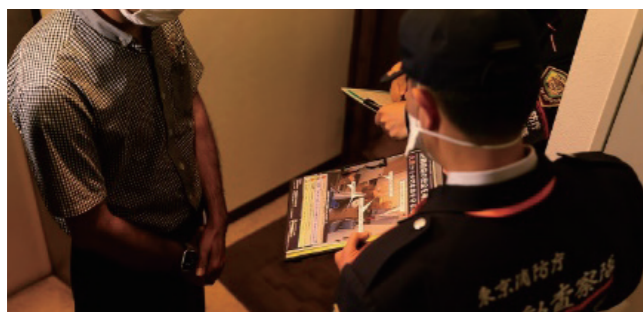
In entertainment districts, there are many small multiple-tenant buildings which tend to violate the Fire Service Law repeatedly due to a big turnaround of the tenants.

Accordingly, to further improve the fire safety of these districts, the TFD members actively conduct on-the-spot inspections and strengthen violation correction guidance. In the Kabukicho area, the Shinjuku Fire Station deploys Inspection Task Forces 24 hours a day.



Inspection Task Forces

Efforts on Securing Safety of Evacuation Routes



▲A member of the Inspection Task Forces is giving safety guidance to a building staff to remove an object from the evacuation route.

Safety Sign for Buildings

● Firesafe Property Certificate System (Firesafe Mark)
This is the system to certify buildings in fire safety excellence.

● Disclosure of the Buildings in Violation
This is the system to disclose buildings violating the Fire Service Law.



Firesafe Mark

Excellent fire safety properties and other buildings with violations can be searched for and checked on the TFD Map.

Fire Safety Guidance in Restaurants



▲Restaurant: Advice on duct cleaning

Notice: When Selling Gasoline



▲Gas Station: Advice to staff on the necessity of identity confirmation when selling gasoline.

Prevention of Electric Fire

The number of the fires caused by electrical appliances has been increasing in recent years, accounting for about 30% of all fires.

The TFD regards “small burns” also as fires and conducts fire cause investigations.



▲Investigation



▲Electric Fire Warning Video (Actress SHIRAISHI Sei as a main cast)



▲Outlet



▲Mobile Battery



Diverse video contents on fire prevention are available on the website.

Private Fire Brigade Training



How to Submit Documents of Fire Protection Management



Independent Fire Protection to Keep Lives Fire-Safe



Disaster Preparedness

In order to prevent natural disasters such as earthquakes and floods and minimize damage as much as possible, close to “zero”, you have to be well aware of, and prepared for, disasters. The TFD offers a variety of safety steps with fire drills for the greater safety of the “new days.”

Home Fire Alarm



Home fire alarms need to be checked regularly (by pressing the button or pulling the string). The alarm beeps if it has no problem. As a guide, ten-year-old alarms need to be replaced.



Home Fire and Life Safety Advice Visit

Fire station members visit houses of people requiring support in emergencies (e.g., seniors, the disabled). They give advice on fire and earthquake safety and accident precautions.



Keep Furniture from Falling and Moving

Earthquakes may topple or move furniture, causing injury, fire or difficult evacuation. Be prepared for a quake with furniture safety steps.



Enhance the Life Safety Action with Knowledge and Experience

In the event of large-scale disasters, local community people need to “protect their community by themselves.” Let’s learn about fire and emergency drills from portal sites on the TFD website and repeat the drills. Let’s acquire life safety action.

Portal Sites: Fire and Emergency Drills

“Portal Sites for Fire and Emergency Drills” are available for your planning and pre-studying.



I want to practice fire drills. But, how?

Check “Drill Menus”! You can check videos and manuals for your study preparation.

防火防災訓練ポータルサイト

防火防災訓練ポータルサイトとは

訓練メニュー 訓練を企画する際の参考資料はこちら	リモート防災学習 動画などのデジタル教材はこちら
防災訓練用車両の紹介 防災訓練用車両について知りたい方ははこちら	初階消火マニュアル 消火器やスタンバイのマニュアルはこちら
電子学習室 防火・防災・救急などの知識を深めたい方ははこちら	「ふんわりふむむ」 詳しくはこちら
	東京消防マップ 防災訓練等のイベント情報を確認したい方ははこちら



Let's learn about life safety remotely by internet and app.



Remote Learning on Life Safety

Review after a drill

Synergy: Learning and Trying

Prepare for a drill

Fire and Emergency Drills

After studying through the portal sites, let’s take part in actual local fire and emergency drills and/or visit one of the life safety learning centers for disaster experience. Review after trying will enhance your life safety action further.

Firefighting Training



It is practical training (e.g., initial firefighting, rescuing) on the street near your house with your neighbors.



Firefighting Training Van

◆It is a practical trainer vehicle with water and equipment. It provides fire and emergency drills anywhere with ease.

Searching for the Drills

You can check fire and emergency drills you can take part in on the TFD Area Map. ※For the TFD Area Map, see P.31.



Life Safety Learning Centers

A tour provides you with experience of earthquake tremors, smoke, initial firefighting and first aid.

※There are cases in which the Centers may change closing time and/or operational procedures. For the outline of the Centers, see P.33. For details, check the Centers’ website.



▲Ikebukuro: Night tours every Friday



▲Honjo: Earthquake simulation experience of outdoor or convenient store venues



▲Tachikawa: Parents and kids' life safety learning space

Volunteer Fire Corps



Wards (Honjo Volunteer Fire Corps)



Tama (Machida Volunteer Fire Corps)

Membership

- Aged 18 or over (in good health)
- Resident, worker or student in the corps service area

Treatment and Payment

- [Reward]**
 - ▶ Given annually and for emergency responding
- [Compensation]**
 - ▶ Given for on-duty casualties
- [Clothing]**
 - ▶ Given as uniform and work clothes
- [Retirement benefits]**
 - ▶ Given for 5-year-or-more dedication
- [Commendation]**
 - ▶ Given for meritorious service



Volunteer Fire Corps Skills Course

The members have the chances to obtain various qualifications (e.g., Class C special ground radio operator, Class B small ship navigator, fire pump specialist, first aid instructor, first aid promoter, etc.). In addition, they can choose courses for sign language, English conversation, and others as well.

◀ Pump specialist



Deployment of Volunteer Fire Corps

In Tokyo, volunteer fire corps are deployed in the Governor-managed special area, the mayor-managed Tama area, and the island areas. Fire corps' gear and uniforms vary with the municipality, and the members variedly receive payment and treatment. Meanwhile, they conduct disaster scene operations and give fire prevention advice as common missions. The facts of the corps are as follows:

	Personnel (Capacity)	Corps	Management (by)	Gear
Tokyo's 23 Wards	16,000	58	Fire Station	Fire coat: green & dark-blue Helmet: green
Tama	9,066	30	Municipality	Varied
Islands	1,587	10		

Volunteer Fire Corps Facilities

Division HQ are the activity base. There, the members assemble in an emergency (to cope with a fire, a quake, etc.) or during the community lookout, give lecture/training sessions, check equipment, have meetings, and so on.



▲ Division 1 HQ, Takanawa Vol. Corps (Since Mar. 2022)



▲ Division 3 HQ, Adachi Vol. Corps (Since Mar. 2022)

Division HQ

Space	About 80m ² / One-, or two-story (1F: warehouse · 2F: meeting room)
Structure	Steel frame
Utility	Electricity & plumbing

Portable Pump Transporter

In the Special Ward area, 315 emergency logistics vehicles are in service, transporting portable pumps and other equipment to disaster scenes.

As of April 1, 2022



System for Enriching and Reinforcing Volunteer Fire Corps' Organizational Power

【Functional System】

This is a system to assign members to a specific task (e.g., public relations, first aid).

【Large-scale Disaster Response System】

This is a system for people with experience in firefighting (fulltime/volunteer), medical or construction fields. They are assigned to respond to large-scale disasters.

※For details, please contact your nearest fire station.



▲ Members for large-scale disaster response in operation

We Go With You



The TFD encourages people to develop fire prevention awareness and disaster preparedness to create safer communities through drills, events, child education, and so on.

TFD Band

“Playing in life safety harmony with communities” as a slogan, the Band promotes life safety to the citizens of Tokyo through diverse events and ceremonies. The Band performs at national events, Friendly Community Concerts, evacuation drill concerts all over Tokyo.



TFD Band TFD Color Guard

TFD Color Guard

The Guard takes part in PR events with the Band. The Guard promotes life safety of the citizens of Tokyo with pleasant performances which represent an appropriate image of fire services.

Fire Vehicle Sketching

Elementary and junior high school students sketch firefighters and fire vehicles, give their images of fire and earthquake for PR posters, and depict future fire vehicles and firefighters.



▲Elementary school students sitting around a fire truck/firefighter and sketching on a drawing paper



▲Elementary school students looking at their own sketches in mini-fire coats

Boys & Girls Fire Club (BFC)

The Club, led by adult volunteer leaders, consists of grade-schoolers and senior high school students who are interested in learning about fire services and fire prevention.



▲Club members practicing initial firefighting

TFD Volunteers

They conduct rescue and first aid, helping fire station members achieve their on-scene missions. They also work with the fire station staff for community fire and emergency drills.



▲First aid instruction given by TFD Disaster Volunteers

Topic

Life Safety Information for Foreign Residents

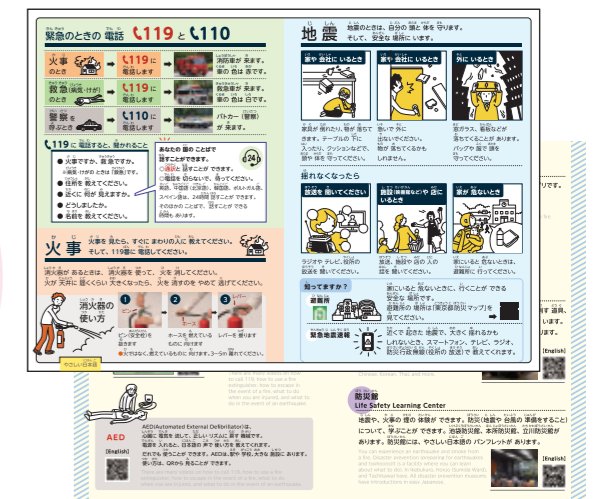
Brochures in Multiple Languages

For foreign residents being able to live in Tokyo without any worries, the brochure provides life safety information such as 119 reporting procedure and how to act in the event of an earthquake. *Information on the brochure is also available on the TFD website.



Languages

- Plain Japanese
- English
- Chinese (Simplified, Traditional)
- Korean
- Vietnamese



EMS VoiceTra



▲EMS activities with EMS VoiceTra (a multiple language translation app)

Fire and Emergency Drills for International Residents



▲Initial Firefighting Guidance at the Embassy of France

We Give Information

TFD Official Website

The TFD Website presents disaster facts and figures, lessons learned from past disasters, earthquake safety steps, daily accident prevention wisdom, and so on. We hope these everyday safety tips will help you develop disaster prevention awareness and skills.



▲You can learn about fire and life safety



▲Tips for life safety and first aid at home and in offices will be on the TFD website.



▲The site explains procedures on fire services.

Topic The TFD Map

Users can search for events and drills at the Fire Stations, buildings of fire safety excellence and those violating the laws.



You can access the map on your smartphone / PC

TFD Official App

It's a convenient, exciting help for you. Get this "emergency buster" app now!



▲Actress MATSUI Rena appears in the video, promoting the app.



SNS

The TFD has its official accounts on Twitter and Facebook. There you can find daily accident prevention steps and event information throughout the year.



Twitter : @Tokyo_Fire_D



Facebook : @TokyoFireDepartment

Official TFD YouTube Channel

The TFD started off on YouTube in 2019 in response to the demands for video work. There you can find the TFD make-up, firefighters in action, easy learning classes, brand-new TFD teams and vehicles, and more.

Please subscribe to the channel.



Newsletter: KOHO TOKYO SHOBO

This is a newspaper flyer that correctly tells you the TFD fire services, sharing safe and secure information with the citizens of Tokyo. You can access the same information on the TFD website and an electronic flyer portal site. Please take a look.



Available at the Following Website



▲Electronic Flyer: Shufool ▲Childcare Platform: COZRE ▲App: Machihiro

Information

Fire Museum

It showcases the fire service history: Edo picture scrolls, *nishikie* colored woodblock prints, Taisho fire vehicles, and the state-of-the-art equipment. In-house guided tours, on the open days from 1:45pm for 30min, help visitors learn *more* about the fire service.



Address : 3-10 Yotsuya, Shinjuku-ku, Tokyo
(Get off at Yotsuyasanchome St. on the Marunouchi Line.(Exit 2))
Phone : 03-3353-9119
Opening : 9:30 a.m. to 5:00 p.m. (Admission free)
Closed : Mondays(If they fall on national holidays, the Museum will be closed on the following days.)
December 29 to January 3



Life Safety Learning Centers

There you can experience earthquake shaking, smoke, firefighting, first aid, and so on to enhance your disaster preparedness with the instructor.



Ikebukuro Life Safety Learning Center

Address : 2-37-8 Nishi Ikebukuro, Toshima-ku. Tokyo
Phone : 03-3590-6565
Closed : the first and third Tuesdays and the following day of the third Tuesday (If they fall on national holidays, the Center will be closed on the following days.) / Year-end & New Year holidays



- 5-minute walk from Ikebukuro St.
- Night tour course

Honjo Life Safety Learning Center

Address : 4-6-6 Yokokawa, Sumida-ku, Tokyo
Phone : 03-3621-0119
Closed : Wednesdays, the third Thursday (If these days fall on national holidays, the Center will be closed on the following days.) / Year-end & New Year holidays



- Brand-new quake simulator
- Urban flood & typhoon simulator

Tachikawa Life Safety Learning Center

Address : 1156-1 Izumicho, Tachikawa City, Tokyo
Phone : 042-521-1119
Closed : Thursdays, the third Friday (If these days fall on national holidays, the Center will be closed on the following weekdays.) / Year-end & New Year holidays



- Kid's zones & space
- Car parking

Contact Information

Residents' Consultation

The TFD has the "residents' consultation window" to receive public opinions and requests. It is placed in the HQ (PR Sec.), fire stations, fire station divisions, and fire station branches.

Public Relations Section: Public Counseling Branch

Phone: 03-3212-2111 ext.2325

FAX: 03-3212-1027

e-mail tfdinfo@tfd.metro.tokyo.jp

(8:30 a.m. to 5:15 p.m. on weekdays)

Closed: Weekends, national holidays, and the period from December 29 to January 3

Disaster Information Guide

23-ward area: 03-3212-2119 Tama area: 042-521-2119

Fire Station Contact

●Administration Section

Administration Branch : Employment exam. information
Accounts Branch : Commission payment

●Fire Suppression Section

Community Safety and Disaster Education Branch : Volunteer fire corps, TFD volunteers, Boys & Girls Fire Club (BFC), fire drills, earthquake safety, and home fire safety
Fire Suppression Branch : Management of fire-related conduct notification, road construction schedule reporting, and water supply suspension schedule reporting, etc.
Emergency Medical Service Branch : First-aid training and ambulance service use proof
Equipment Branch : Inquiries about fire vehicles, equipment, etc.

●Fire Prevention Section

Fire Protection Management Branch : Fire protection management, fire protection plan notification management, regular building inspection & report system, private fire brigade training, and exam. /course application
Fire Prevention Branch : Fire protection equipment advice, building fire safety advice, and management of building use reporting and event schedule reporting.
Fire Inspection Branch : Management of fire protection equipment check reporting and remodeling reporting
Hazardous Materials Branch : Hazmat permission and fire loss certificate application

●Fire Station Division and Fire Station Branch

For efficient services, your prior consultation is recommended.
※Please check with your local fire service authorities.