

## Situations in which you should call an ambulance without hesitation (Adult)

If you experience **any of these symptoms**, please call 119 **without hesitation**.  
They may indicate a **serious illness or injury**.

### Face

- Half your face is difficult to move, or has pins and needles
- Your mouth or face is twisted when you smile
- You cannot speak properly
- Your sight is impaired
- You suddenly have double vision
- Your face is a strange color



### Head

- Sudden, strong headache
- Sudden high fever
- You feel so unstable that you cannot stand without support

### Chest and back

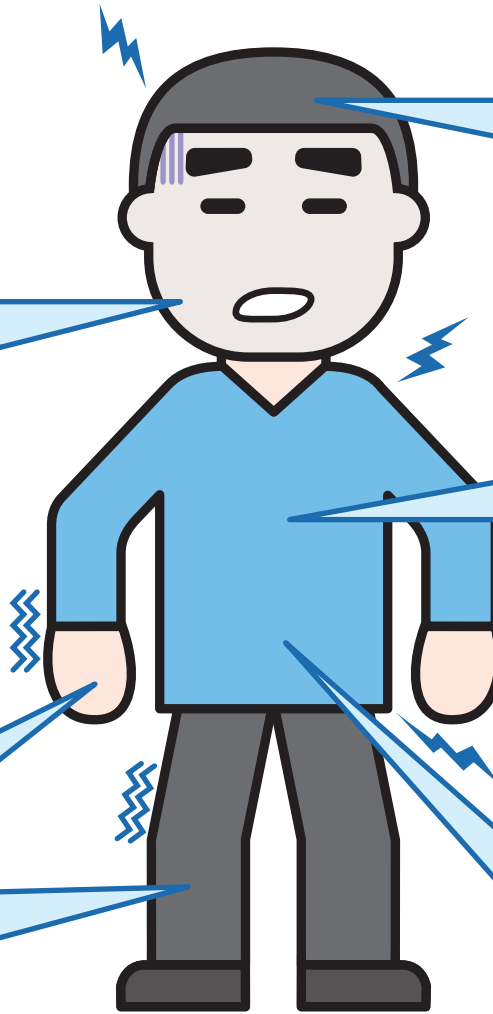
- Sudden sharp pain
- Sudden loss of breath or difficulty breathing
- A sense of tightness or pressure in the chest, lasting 2 or 3 minutes
- Pain moving around your body

### Hands and Feet

- Sudden pins and needles
- Sudden loss of strength in one leg or arm

### Stomach

- Sudden sharp pain
- Continual strong pain
- Vomiting or excreting blood



### Problems with consciousness

- Unconscious (no response) or incomplete consciousness (confused or vague)
- Sense of exhaustion



### Spasm

- Continuous spasm
- Spasm ends, but consciousness does not return

### Injury/burn

- Injury that includes significant blood loss
- Burns across a wide area



### Nausea

- Strong nausea accompanied by cold sweats

### Swallowing

- Food stuck in throat, difficulty breathing
- Patient has swallowed an object and is unconscious



### Accident

- Have been in a traffic accident (strong impact)
- Have been submerged in water
- Have fallen from a height

◎ **Any other situation in which the patient's condition is altered or unusual.**

## Situations in which you should call an ambulance without hesitation (Child up to the age of 15)

If you experience **any of these symptoms**, please call 119 without hesitation.  
They may indicate a **serious illness or injury**.

### Face

- Lips purple, breathing shallow



### Chest

- Sharp coughing, wheezing, breathing difficulties, facial color poor

### Legs/arms

- Legs or arms rigid

### Head

- Head hurts, spasm occurs
- Has hit head, accompanied by continuous blood loss, loss of consciousness or fitting

### Stomach

- Strong diarrhea or nausea, not eating or drinking, consciousness impaired
- Suffering from strong stomach pain with repeated nausea
- Blood in feces



### Problems with consciousness

- Unconscious (no response) or incomplete consciousness (confused or vague)



### Rash

- Bitten by an insect, body covered in rash and facial color poor

### Spasm

- Continuous spasm
- Spasm ends, but consciousness does not return

### Burns

- Severely painful burn
- Burns over a wide area

### Swallowing

- Child has swallowed an object and is unconscious

### Accident

- Have been in a traffic accident (strong impact)
- Have been submerged in water
- Have fallen from a height

### Children under 3 months old

- Any situation in which child's state is altered.



◎ Any other situation in which child's state is unusual or altered.