

Precautions for Using and Handling Stoves and Electric Heaters

Do not use cooking equipment and cookware other than those provided in the room.

Check the instructions for using the equipment before using it.



Do not step away from the stove while cooking.



Do not place flammable items near or on the heater.



Smoking Rules

We appreciate your cooperation with the following fire prevention measures.

Do not smoke in places other than where smoking is allowed.



Pour water on cigarette butts to completely put them out before throwing them in the trash.



Do not smoke in bed.




How to Make Fire and Ambulance Calls

Dial 119 immediately in an emergency when there is a fire or you need an ambulance.


Dial 119.

Answer the questions.

Fire or ambulance?



Fire
Where should we send the fire engine?
What is burning?



Ambulance
Where should we send the ambulance?
May I have your name?

Where you are (Be sure to notify the operator).

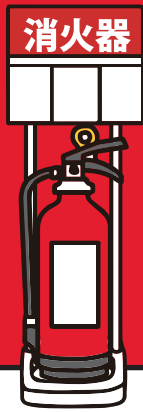
Address

Building name, room number

Landmarks

A fire engine or ambulance will head to the site from the nearest fire station.





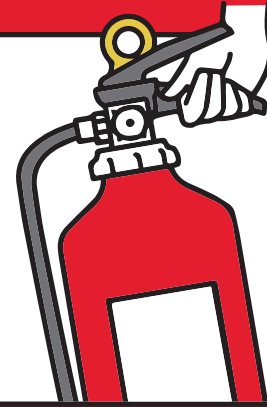
How to Use a Fire Extinguisher

Check how to use a fire extinguisher so that you can put out a fire quickly if one breaks out.

Escape immediately when you find it difficult to put out the fire.

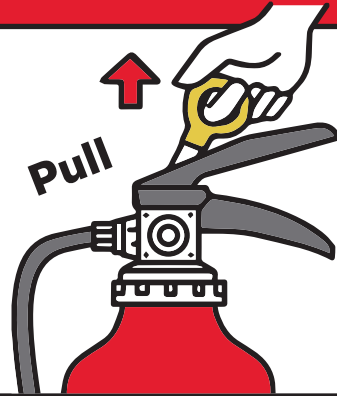
1

Hold the lower handle when you carry the fire extinguisher.



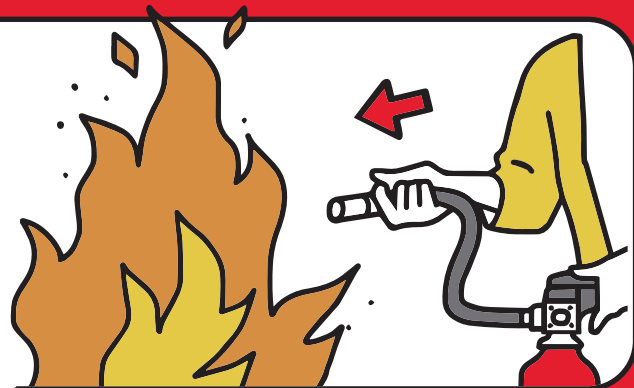
2

Pull up the safety pin.



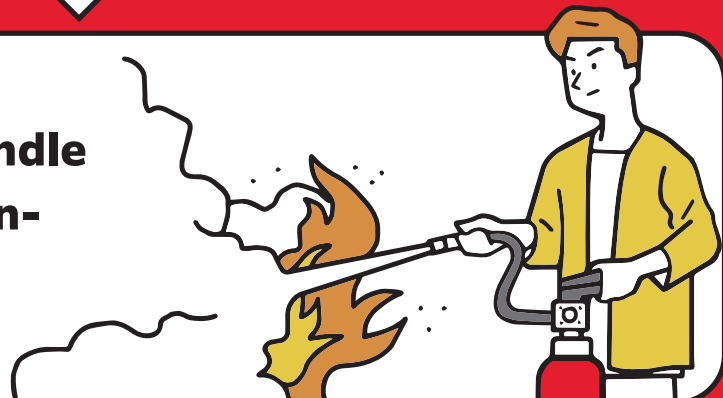
3

Aim at the base of the fire.



4

Squeeze the handle to emit the extinguishing agent.



Precautions upon Lodging

We appreciate your cooperation with the following fire prevention measures.

Precautions for Using and Handling Stoves and Electric Heaters



Check the instructions for using the equipment before using it.



Do not step away from the stove while cooking.

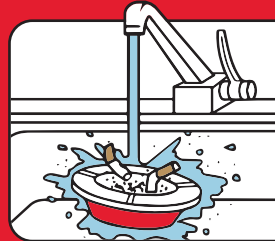


Do not place flammable items near or on the heater.

Smoking Rules



Do not smoke in places other than where smoking is allowed.



Pour water on cigarette butts to completely put them out before throwing them in the trash.



Do not smoke in bed.

How to Use a Fire Extinguisher

Escape immediately when you find it difficult to put out the fire.

1

Hold the lower handle when you carry the fire extinguisher.



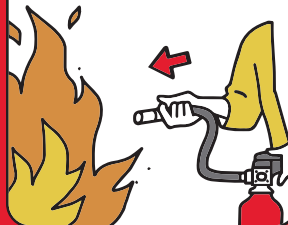
2

Pull up the safety pin.



3

Aim at the base of the fire.



4

Squeeze the handle to emit the extinguishing agent.



Fire and Ambulance Calls

- Dial 119.
- Answer the questions.
- Fire or ambulance?

Where you are (Be sure to notify the operator).

Address

.....
Building name, room number

.....
Landmarks